

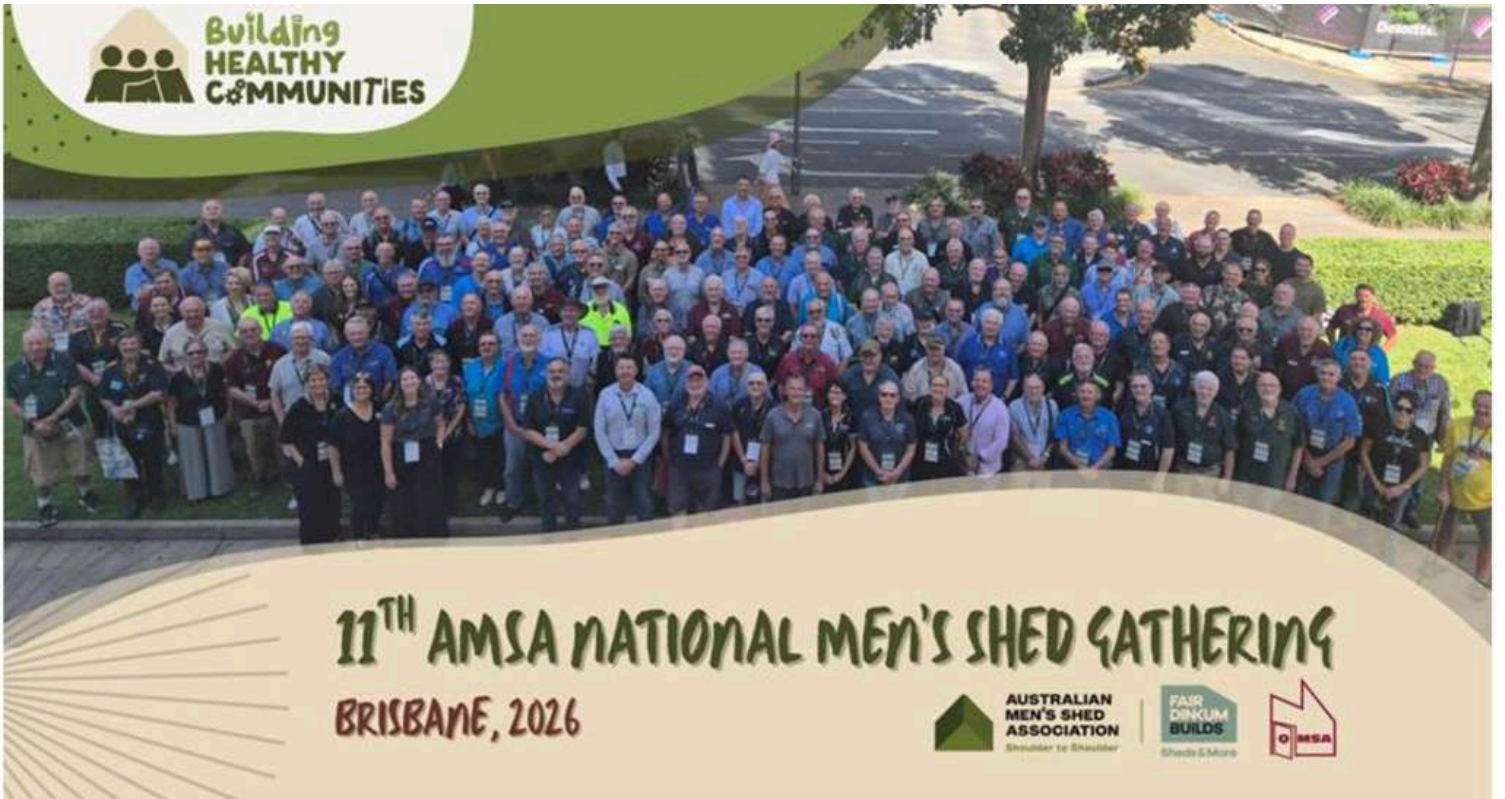
SHED TALK

THE NEWSLETTER OF THE
MT. GRAVATT MEN'S SHED

VOLUME 17 APRIL 2026 NO.4



LEST WE FORGET



IN THIS ISSUE

President's Ponderings	2
Letters to Editor	3
Caravan Cubby	4
Coolum Men's Shed Music	5
Around the Shed	6
Anzac Day	9
Garry Dolan Artist	10
AMSA Brisbane Gathering	11
Music	12
Chess	13
Trowse Construction	14
Tribute to Ted Sanders	15
Photography	16
Lindeberg Cartoon Corner	17
Social Meeting Minutes	18
Allan & Robyn Wallace	19
Humour	20
May Calendar	22

Australian Men's Shed Association

The AMSA National Men's Shed Gathering

The AMSA National Men's Shed Gathering takes place every two years, uniting the national and, this year, international Men's Shed communities along with stakeholders for learning, development, and networking.

At its core, the Men's Shed movement is practical. As men, we fix things, build things, and solve problems. However, it embodies something deeper: connection, purpose, and belonging, which we refer to as mateship.

For over 30 years, Men's Sheds have quietly demonstrated a fundamental truth: when men connect, engage, and contribute, their well-being improves, as does the well-being of their surrounding communities.

Despite these efforts, men's health outcomes in this country still lag where they should be.

Social isolation affects men of all ages, yet we now have genuine government commitment and support to drive change. With this support comes greater expectations for organisations like ours to continue leading and evolving to achieve better outcomes for all Australian men.

Vision

Provide Mateship and Support for Men

PRINTED COURTESY OF COUNCILLOR KRISTA ADAMS
& THE HOLLAND PARK WARD OFFICE

About us

Patrons

Body Dr Brian Kable

Mind Prof Grant Devilly

Spirit Rt Rev Doug Stevens

Management Committee

President Peter Tyley

Vice President Lionel Armitstead

Secretary Mark Gillow

Treasurer Kingsley Manickam

MC Members Lionel Armitstead,
Bruce Conmee, Wayne Hansen,
Mark Hastings, Bart McKnight,
Kevin Schneidewin, Andris Svilans

Area Co-ordinators

Building & Grounds Stephen Ord

Workshop Projects Fred Darvill

Community

Projects Bart McKnight

Office Jim Wiseman

Recreation Room Colin Smith

Workshop Lloyd Akeroyd

Welfare Ron Fair

Other

Music Coordinator Terry Thomson

IT Coordinator Bruce Conmee

Deputy IT Coordinator

Assistant Treasurer John Bettenay

Assistant Welfare Gerry Heneghan

Woodworking Facilitator Lloyd Akeroyd

Wood Machinery Lloyd Akeroyd

Immediate Past President John Wicks

Test & Tag Brad Gibson, Nev O'Brien

Editorial Team

Editor Wayne Hansen

Proof Readers Reuben Egan, Neil McPhail

Editorial Assistant Kevin Lindeberg,

Kim Tvede

Email newsletter@mtgravattmensshed.org.au

Mail

Secretary

Post Box 239

Mansfield Qld 4122

Phone shed Office (07) 3343 2216

www.mtgravattmensshed.org

Email: secretary@mtgravattmensshed.org.au



New Building Sub-committee

L-R: Feffrey Farrah, Mark Hastings, Skinny Burke, Dave Tate, Lionel Armitstead,
(Bruce Conmee - resigned)

President's Ponderings

As May approaches, I've been reflecting on how far we've come as a Shed and the exciting journey ahead with our upcoming new building.

While it may seem like merely additional floor space, it signifies much more. This building is about creating room — not just for tools and benches — but for people, ideas, and the camaraderie that defines our community.

We've all experienced how bustling things can get at times. Adding a few more walls and a bit of extra space will significantly enhance safety, comfort, and accessibility for everyone, whether you're working on a project, learning something new, or simply enjoying a cup of tea and a chat. The additional space will truly make a difference.

What excites me the most is the future it represents. This expansion allows us to welcome new members without compromising the friendly, laid-back atmosphere we cherish. It also paves the way for greater community engagement and a broader array of activities — something I know many of you are eager to experience.

Ultimately, the Shed has always been about more than just what we create with our hands; it's about the relationships we cultivate with one another. This extension ensures we can continue fostering those connections beautifully for years to come.

There's so much to look forward to, and I'm sure you'll all agree — it's an exhilarating time to be part of the Shed.

Until next time,

Peter Tyley

0458 553 330

peter.tyley@bigpond.com

News for Queensland Sheds! News, Giveaways, Shed Events and more!

The 11th National Men's Shed Gathering 2026, held in Brisbane from Tuesday, 24 to Thursday, 26 March, was a resounding success. The sold-out event brought together Sheds from across Queensland, Australia and beyond, with Shedders fro...

 mailchi.mp

<https://mailchi.mp/qmsa/newsapril2026>

Link to Shed Chatter



Hi Wayne,

The grocery store on the corner of Broadwater Rd and Logan Rd was always a shop when I was a kid. There were two attached shops, the grocer and a produce agency where we would buy farm aids such as laying mash for the chooks and hay for the cow.

Well now, in 2026, the building is being demolished to make way for townhouses or units. My memories of this store are in 1956 when I was an eleven-year-old and rode my push-bike, I waited under the awning for the Olympic torch to come by on its way to Melbourne.

Then again in 2000, I decided to wait in the same location for the Olympic torch to pass by on its way to Sydney.

In 2000, it was a changeover spot for different runners and the media were Channel 7 and 9, both had cameras to record the event.

Last week I got the attached photo just for keepsakes.

Regards
Dave Tate

Hi Wayne,

There seems to be some confusion as whether my daughter Melissa's portrait, is it a photo or a painting?

Would it be possible to put a P.S in this month's newsletter:- The portrait shown in last month's newsletter is in fact an oil painting, not a photo.

Regards Alan Highman



To all Members,

I strongly urge you to read the article on Fractal Wood Burning featured in the QMSA News Update. I know one of our Shed members practices this technique, but he does so at home, and I don't know his identity. Last year, two Men's Shed members from Buderim or Maleny visited MGMS and were quite impressed by the Fractal Wood Burning demonstration. They planned to discuss it in their own Shed and were considering implementing it.

The attached article highlights that this practice is ILLEGAL and DANGEROUS, with reports of it leading to fatalities. We must identify the member at MGMS who has been engaged in this activity, ascertain whether he is still doing it, and inform him about its legal and safety implications.

Additionally, within the same News Update, there is an interesting article about a survey conducted on Men's Sheds in Scotland. This survey focused on younger working men (ages 16-65) to understand their needs within a Men's Shed and how it could benefit them. The findings suggest that there is very little difference between Men's Sheds in Scotland and those in Australia.

Cheers,
Lionel Armitstead

Cover

St. Barts
Anglican
Church
Mt Gravatt

We gather for worship Every Sunday at 7.00am & 9.00 am

ROTARY CLUB OF MOUNT GRAVATT Inc.

PROUDLY SUPPORTS
THE MOUNT GRAVATT MEN'S SHED Inc.

Rotary Club of Mt Gravatt is a platinum sponsor of the Shed.

*Striving to be a Christ
Centred Family Community*

HERTFORD STREET BAPTIST CHURCH
Cor of Hertford & Dupre Sts.
Upper Mount Gravatt. 3343 6405
Service Time 9:00am
MGMS Bronze Sponsor

The making of the Caravan Cubby

Bryan Cleary

We're halfway through our Shed Raffle Caravan Cubby - and it's been a true team effort (with plenty of sawdust along the way!).

24 February

Ross, Howard and Bryan scored 5 sheets of shadow-clad plywood usually \$170 each, but thanks to a few "character marks," we nabbed them for just \$33 a sheet. Bargain of the year and perfect for the cubby!

4 March

Using steel from the shed, Ross and Bryan built the chassis in about 8 hours. With a donated jockey wheel (thanks Sam!) and custom adjustable stabiliser legs, she's already looking the part. Add in pneumatic wheels and we've got a cubby on the move. The floor was glued and screwed into place, setting us up for the next stage.

Shoutout to Bart, Barry Smith and Mike Hayes for jumping in to help, many hands make light work.

17 March

Sides were cut, shaped and braced, ready for modular assembly (so shed life can keep rolling as usual).

Next up: interiors! Bryan, Ross and Sam are on the sides, while Skinny and Steve tackle seating and the table.

At this stage:

Cost: just \$205!

Time: 120 hours of shed effort

PS: We're on the lookout for flat Colourbond roofing sheets (or anything else handy). If you've got something to spare, we'd love to hear from you!



Ross and Bryan



Sam and Bryan preparing the side



The chassis



The important detailed drawing



Cordless Drill



Australian Government

BUILDING OUR FUTURE



Queensland
Government

Page 4

Mount Gravatt Men's Shed Inc.

Proudly supported by



Dedicated to a better Brisbane

Coolum Men's Shed



Coolum Coasters - one of the Coolum Men's Shed's Bands

Hi fellow shedders and musos,

My name is Bob Barford, and I am the Artistic Director of the ShedMusic '26 festival as well as the Music Co-ordinator at the Coolum Men's Shed.

The festival grew out of a joint idea back in early 2024. A working group was put together to identify our objectives, philosophies, strengths and weaknesses and to provide a yardstick to measure our success. From that a committee was formed with tasks being allocated accordingly. A venue was secured and funding applied for and received.

ShedMusic was borne and is now in it's third year and growing well.

The acceptance of music as an integral part of shed culture is an important component of our success. Our "Music for Health initiative" has played a major role in the success of the festival and our music groups in general. We have a close working relationship with Queensland Health.

The festival itself provides a stimulating focus for those acts involved. It raises the performance levels and encourages strong collaborations in a fun environment.

The outcomes are a joy to behold.

I have been playing music since the mid 60s, professionally for most of that time, touring Australia and internationally. The Men's Shed movement has given me a wonderful opportunity to share and give back some of that experience.

Everyone is welcome at a ShedMusic Festival.
We would love to see you there.
Friday 16, Saturday 17, Sunday 18 October 2026

And indeed at any of our sessions.
Coolum Men's Shed
26 Research Street, Coolum Beach, Queensland.
ShedJazz - Monday afternoon
ShedHarmony - Wednesday morning.
ShedGrooves - Friday morning.

Please get in touch if you have any questions or thoughts.

COOLUM MEN'S SHED PRESENTS

ShedMusic Festival '26

for more info scan here



Friday, Saturday & Sunday
16th, 17th & 18th Oct.
Coolum Civic Centre & Coolum Men's Shed

MATES MAKING MUSIC
A Music for Health initiative

Cover

So... you wanna play too?

Making music is good for your health — and ShedMusic '26 is all about celebrating that.

Presented by Coolum Men's Shed, ShedMusic '26 is a Music for Health initiative that brings people together through the power of music.

The ShedMusic '26 Festival gives Men's Shed musicians of all abilities the chance to perform for fellow Shed members and the wider community, all in a welcoming, relaxed setting that also supports on-site health checks.

Come and join us

Once again, the festival will showcase amateur Shed musicians from across Australia and New Zealand. You are welcome to join us as performers or audience.

Take advantage of special ShedMusic early-bird accommodation offers and enjoy a fun-filled musical weekend on Queensland's stunning Sunshine Coast.

For more info or to register for FREE contact Bob Barford

- 0407 895 011
- +61 407 895 011 (WhatsApp)
- blbarford@gmail.com

www.coolummensshed.org/shed-music-2026

Around the Shed



Woodworking Group with children's table



Peter & Greg - Emerging Technologies



Greg Rees - Metal Machine Mentor



Steve Stanford & Hans Gottiieb - New Members



The big Small Engine Group



The Indoor Bowls Group



Michael Hayes with his brass and wooden barrelled cannons



Kim Tvede in the Wesley, with two new knees





New Inductees - Darren Ferguson, John Doody, Tom Ducrow,



Chess Group in action



After playing 500 - Bridge



Workshop Creed



Sausage Sizzle Guest Speaker - Secretary Mark Gillow



Patrick at the bench

Cover



Mt Gravatt High School prefects with shed members John Raines, Hugh Smith, Flight Lieutenant Bryce Geoghegan and Andrew Beattie, the headmaster. In excess of 1000 students filled the school auditorium to commemorate this special occasion.

When war broke out in 1914 Australia had been a federated nation for only 13 years, and its government was eager to establish a reputation among the nations of the world. When Britain declared war in August 1914 Australia was automatically placed on the side of the Commonwealth. In 1915 Australian and New Zealand soldiers formed part of the expedition that set out to capture the Gallipoli peninsula in order to open the Dardanelles to the allied navies. The ultimate objective was to capture Constantinople (now Istanbul), the capital of the Ottoman Empire, an ally of Germany.

The Australian and New Zealand forces landed on Gallipoli on 25 April, meeting fierce resistance from the Ottoman Turkish defenders. What had been planned as a bold stroke to knock Turkey out of the war quickly became a stalemate, and the campaign dragged on for eight months. At the end of 1915 the allied forces were evacuated from the peninsula, with both sides having suffered heavy casualties and endured great hardships. More than 8,000 Australian soldiers had died in the campaign. Gallipoli had a profound impact on Australians at home, and 25 April soon became the day on which Australians remembered the sacrifice of those who died in the war.

Although the Gallipoli campaign failed in its military objectives, the actions of Australian and New Zealand forces during the campaign left a powerful legacy.

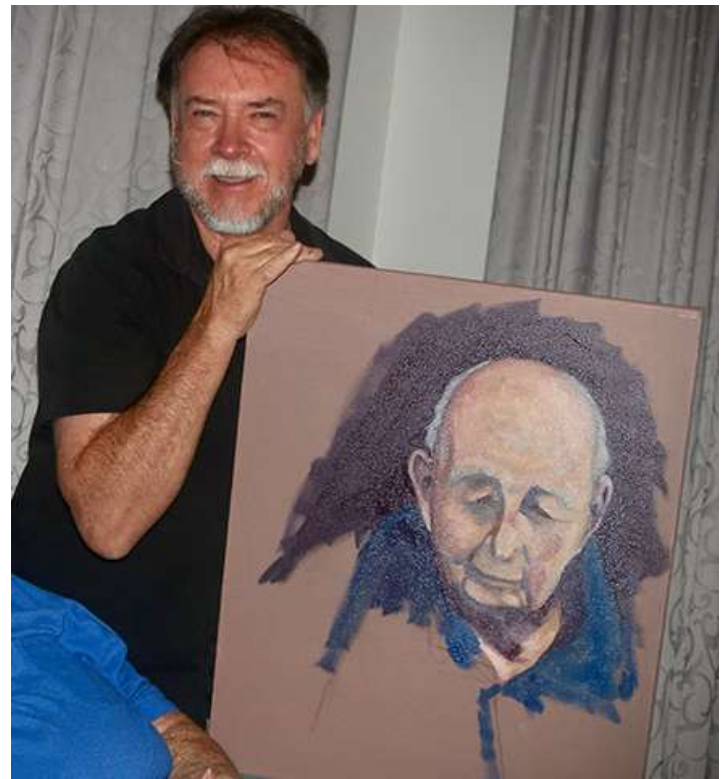
Anzac Day served to commemorate the lives of Australians who died in the Second World War, and in subsequent years, the meaning of the day has been further broadened to include those who lost their lives in all the military and peacekeeping operations in which Australia has been involved.

Anzac Day was first commemorated at the Memorial in 1942. At the time, government orders prohibited large public gatherings in case of a Japanese air attack, so it was a small occasion with neither a march nor a memorial service. Since then, Anzac Day has been commemorated at the Memorial every year.

Australians recognise 25 April as a day of national remembrance, which takes two forms. Commemorative services are held across the nation at dawn – the time of the original landing, while later in the day, former servicemen and servicewomen meet to take part in marches through the country's major cities and in many smaller centres. Commemorative ceremonies are more formal, and are held at war memorials around the country. In these ways, Anzac Day is a time at which Australians reflect on the many different meanings of war.

Victory in Europe Day is the day celebrating the formal acceptance by the Allies of World War II of Germany's unconditional surrender of its armed forces on Tuesday, 8 May 1945; it marked the official surrender of all German military operations.

Air Force veteran Garry Dolan rediscovered his passion for art and the joy of inspiring others to be creative.



As a young man, Garry was drawn to the stunning landscapes of Port Stephens in NSW, spending his weekends capturing their beauty through intricate paintings. His artistry was not only fuelled by the natural wonder of the area but also by the sound of Mirage jet fighters taking off from the nearby Royal Australian Air Force (RAAF) Base Williamtown.

A deep fascination with aviation led Garry to join the RAAF, where he served as an electronics technician. Sadly, a life-changing motorbike accident ended his military career, urging him to pursue a degree in sports management.

"After receiving high quality training as a radio technician and working in both the air and ground environments, finding employment and transitioning into civilian employment was quite easy," Garry says.

He went on to travel throughout Australia and Europe in his new job, working in the promotion of car and motorbike racing. While his career was a success, Garry's big challenge lay in recovering from his motorbike injuries and adapting to everyday life outside Defence.

"After being medically discharged from the injuries sustained in a major motorcycle accident, adjusting to civilian life was more difficult," Garry explains.

During a medical visit to London, Garry stumbled upon an article on oil painting, which rekindled his interest in the art form. This revived passion led him to pursue a career as a full-time artist, showcasing his work in esteemed locations such as the Pentagon and the Australian War Memorial. "I took up painting again mainly for my own mental health. I had no real thoughts of becoming professional," Garry explains.

"I quickly fell in love with painting and was very aware of the changes that being an artist made to my life. It gave me a new network of friends, a new sense of worth and identity and, most importantly, it changed the way I looked at the world." Garry enjoys helping others discover their artistic side by teaching classes at the Centenary Suburbs Men's Shed. He believes that age holds no bounds, and loves watching his elderly students become fully absorbed in artistic expression, finding a sense of community connection and wellbeing through their shared passion.

"I now look at everything I see in more detail and with greater appreciation for the beauty in everyday things," Garry says.

"It is a form of meditation in that the rest of the world disappears and only the subject, the paint, brushes and canvas exist. This is what I try to pass on to my students."

Together with his wife Kate, Garry embarked on a six-week holiday in September 2023 to paint racing cars and bike races throughout Europe. They now reside in Kenmore in Brisbane, where Garry has his studio, creating and sharing his passion with the world.

Garry teaches at the Centenary District Men's Shed's art program on Wednesdays from 10am-2pm.

Mal Lancaster PSM RFD

11TH AMSA NATIONAL MEN'S SHED GATHERING

BRISBANE, 2026



Session in the Catalina Room at Royal on the Park



Wooden Plaque presented to Mel White, Membership & Insurance Manager AMSA. Tony G used the CNC Router to inscribe it.



Shedders Big Breakfast in the City Botanical Gardens



David Kerrigan with a group from the Queensland Police Pipes & Drums Band



A shedder with the Governor of Queensland Janet Young and husband



QMSA CEO Frank Pearce with buddy



Photo above shows a small contingent from the "Girls Guides Hut Guys" group playing under the gazebo and sheltering from the rain on the morning of 24th March. They were performing some acoustic numbers for the visiting AMSA conference people. In the front row from the left are Don McCormac, Brian Power and Gavin Taylor. Back row from the left is Bert Savage, Trevor Patrick, Paul O'Neill (obscured) and Mike Clarke. This group called "The Shed Beats", who play unplugged acoustic guitars and use I-pad tablets mounted on their music stands, wore their shed shirts, represented the shed fantastically and performed magnificently to a very appreciative roaming audience. The group played and sang songs including "King of the Road", "Blueberry Hill", "Devil Woman", "Kansas City", "When I'm Sixty-Four", "Bad Moon Rising", "Cover of the Rolling Stone", "Country Roads", "I can See Clearly Now" and "Song Sung Blue" to name but a few. Lyric sheets were handed out to the audience and they got involved, joined in and participated in the singing.

Next to perform were the Friday "Ukulele Group" who acquitted themselves very well and created a lot of interest. They were followed by "The Shed Tones" Tuesday JAM group boys who played "Way Out West", "Folsom Prison Blues", "Let Me Be There" and finished with "The Shed Song" as the visitors prepared to depart. Terry introduced the "Shed Tones" and the song, and then explained there was a competition a few years ago for members to compose a suitable song and this was the winner. Also that it is set to the tune of "Waltzing Matilda" a song that can best be described as a classic Australian anthem with which everyone is familiar. He had distributed previously on to the folding tables in the recreation room some leaflets with the lyrics for the shed song and an overview of the Shed Music program and all the groups involved. Great effort men!

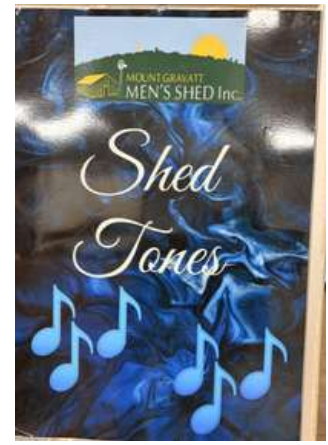
Photo below shows the very talented "Shed Tones" musicians (what a fine body of men) at the sing-a-long in the shed recreation room on Thursday night of 16th April. They are from the left Laurie O'Brien, Kornel Banvolgyi, Terry Thomson, Basil Wood, Jack Files and Dave Williamson. They were psyching themselves up, after the late withdrawal of several musicians, before entertaining the somewhat smallish but enthusiastic gathering. Laurie was the 'ringmaster', Tony G told some jokes, Jack introduced most songs and Jack's wife Val operated the computer and did a good job keeping the music images up on the big screen. All musicians sang and played well and the intros and endings excellent. It was a fantastic night with great entertainment, jokes plus stories and powerful singing. After the "National Anthem" and "Shed Song" the program included songs such as "Travellin' Man" recorded by Ricky Nelson, "I Couldn't Live Without Your Love" a Petula Clarke number and "Blue Hawaii" and "Hound Dog" both Elvis Presley classics. Next was a medley of songs including "Deep in the Heart of Texas" and "Roll out the Barrel". These were followed by "Rock Around the Clock", "Little Old Wine Drinker Me", "Islands in the Stream", a medley which included "From a Jack to a Queen" and "Green Door". A great supper was welcomed with, as usual; a magnificent spread and a well needed cuppa and short break. The last bracket of songs included Nat King Cole's "Ramblin Rose" and many more. Kornel performed magnificently a solo on his violin before the end of the night came quickly and we sang "We'll Sing Again" to wrap it up. We packed up and locked up in record time with everyone helping and contributing.



"1st Sing-a-long for the year"



Laurie O'Brien



"The Band in Action Mode"



Dave Williamson & Gerry Larkin

Cover

Chess Group

Alan Highman



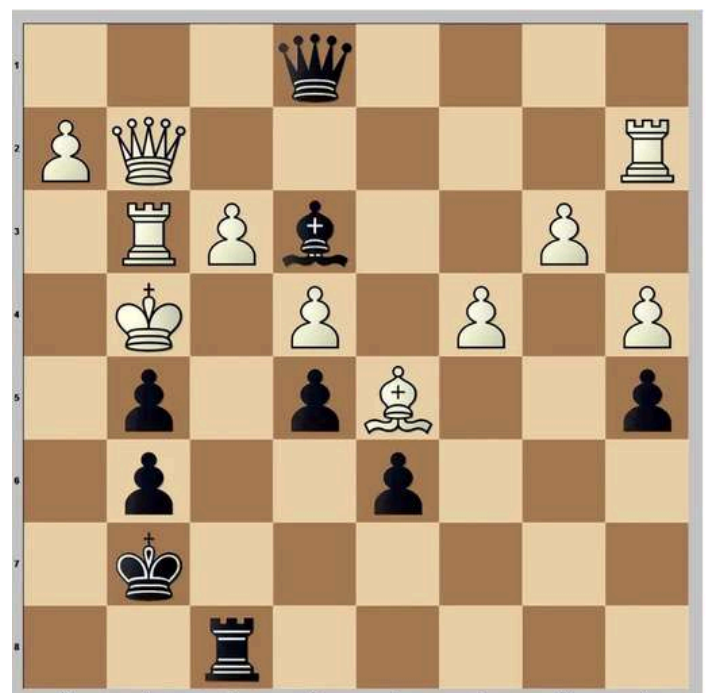
Hi Shedders,

Unlike most games, the influence of luck is almost zero per cent in chess. Both players have complete information about what is happening. There are no dice, no cards to be dealt, or any other form of luck except perhaps making the first move or your opponent making a mistake. Statistics have shown that in 56% of cases, white wins.

Chess does involve concentration and planning—great skills to keep your brain active. Chess is also a friendly game. Players always finish the game with a handshake and an acknowledgement of effort by both parties. Come along and see for yourself. We always love to see new players.

This month's puzzle is Black to move and mate in 3 with any defence.

Solution Page 17.



Cover

Projects currently under construction by Trowse Constructions.



317 Stafford Rd Medical Center



508 Chambers Flat Road
Four storey school building almost completed



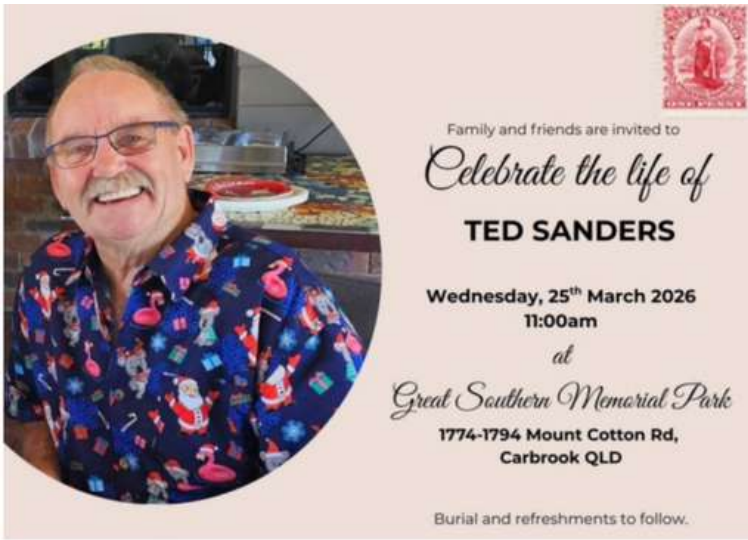
West Morton College 8 Keswick Rd Karrabin (Ipswich) 80% complete

Trowse Construction is the successful tenderer for our new building complex. They have extensive experience in the construction industry.



601 Milton Rd Toowong Car Dealership almost finished





A Tribute to Ted Sanders

Gerry Heneghan and I attended the Farewell Ceremony for the late Ted Sanders on Wednesday, March 25, at the Southern Cross Memorial Gardens in Carbrook. It was a heartfelt occasion filled with laughter, tears, and countless shared memories. Ted was clearly a devoted family man who embraced a life rich in love, aspirations, and adventure. The two songs played during the celebration, “Always Look on the Bright Side of Life” and “You Raise Me Up,” beautifully captured a life of optimism and gratitude.

Edward Charles Sanders, known as Ted, was born on May 1, 1950, in Christchurch, New Zealand. From a young age, he spent his days picking and sorting tomatoes on his parents' tomato farm, which led him to discover his absolute distaste for tomatoes. He also worked in his parents' fish and chip shop in Papanui and had some unique chores, including emptying the household bedpans.

In his twenties, Ted did what many young New Zealanders did at the time: he travelled the world, visiting Australia and New Zealand in 1975. The following year, he purchased his first home in Christchurch. Though modest, he took immense pride in paying it off in just three years through hard work and dedication.

Still seeking adventure, Ted travelled again in 1979, this time to Papua New Guinea, where he worked as a diesel engineer in Lae. He learned to scuba dive and participated in the Hash House Harriers. It was during this time that he met Esther, an Australian Volunteer Abroad who taught Physical Education and Health at Balob Teachers College in Lae. He quickly recognised that she would be an extraordinary life partner. They married on April 12, 1982, in Gympie, Queensland, and settled in Australia—a decision he always regarded as the best he ever made.

Ted continued his career as a diesel engineer and, in 1997, launched his own business, Diesel Australia, in Slacks Creek. He was ambitious, organised, and hardworking, earning numerous trade awards and proudly maintaining every certificate and reference.



Gerry Heneghan at the funeral

In 1998, Ted learned that he had liver disease. Rather than allowing this to deter him, he felt a strong desire to give back. In 2003, he began volunteering for Lifeline, providing support to those experiencing some of the darkest moments of their lives. This role suited him perfectly, as he possessed empathy, patience, and a natural talent for connecting with others. Many individuals owe their lives to Ted, who happened to be on the line during their most challenging nights.

In 2013, Ted joined the MGMS and volunteered for the Welfare Team. I was fortunate to be assigned to the same team, where I witnessed firsthand Ted's genuine care for members in need, as he helped them to the best of his ability. Ted was humble and private, rarely discussing his achievements. He was a person of action, and while MGMS is fortunate to have many dedicated volunteers who coordinate and lead activities, it is clear that Ted truly made a significant impact—one that MGMS proudly acknowledges as part of its vision of “Men Making a Difference.”

I am confident that when Ted transitioned to the afterlife on Monday, March 13, he would have heard the words, “Well done, thou good and faithful servant, enter now with joy, into

— Reuben Egan

Photography Group

Bulimba Street Scape

15th April 2026



Stephen Fluerty



Mark Gillow



Lionel Armitstead



Baska Desha



Keith Cordwell



Neil McPhail

Link: <https://www.mtgravattmensshed.org.au/photography>



HITTING THE MARK...

OPPS!!!...I FORGOT MY HEARING AID AGAIN..."

...NOT MY HEAD!!!!

Lindbergh 2015

Cover



With today's gasoline prices, more and more men are dependent on their wife's vehicle

A History of...

DO WE LOOK LIKE WE MADE OUR RESERVATION ONLINE?

Lindbergh 2015

This is why babies are born without Teeth 🦷



STRATEGY PARTNERS
WORKING EXPERTISE RELIABILITY
SERVICE SUCCESS
GROWTH TRUST
Signarama
SPORT IDEAS
COMMITMENT EFFICIENCY
DECISION SPEED
QUALITY DESIRE

Mount Gravatt

Unit 3/39 Secam Street
Mansfield QLD 4122
T: 07 3343 9588

mountgravatt@signarama.com.au
signarama.com.au/mountgravatt



1. R-f4+
 2. Kxp B-b6
 3. Any B-d8#
- Alternative:
2:K-h3 R-h4#



Social Meeting

13th April 2026



Singing the Shed Song

President's Report:

A local entrepreneur may offer a vehicle for the shed. Transporting members to the Social Meeting will be our top priority. The next Social Meeting is scheduled to take place in the recreation room of our shed, which will save us \$190 in rental costs. In March, we welcomed 13 new members, setting a new record!

AMSA Visitation:

We decided to showcase our unique activities that are not typically found in other sheds. Fifty-seven delegates from various sheds across all states, except for NT, arrived by bus after enjoying morning tea at the Centenary Shed. President Peter Tyley, along with three MC members, welcomed the group and divided them into three smaller groups. They were guided to different areas of the shed where activity leaders and volunteers showcased their impressive creations.

The visitors enjoyed a delightful lunch crafted by Colin Smith and his team of volunteers. Background music was provided by three of the shed's groups, and *The Shed's Song* was performed following a few brief speeches. Before leaving, the group received a sample bag filled with laser-engraved trinkets and an Activity Booklet.

The delegates were thoroughly impressed with their visit to the Mt Gravatt Men's Shed and commended our volunteers for the excellent way the shed was presented.

Minutes aren't available because the shed requires a Minute scribe for the Social Meetings. Anyone willing to volunteer?



President Peter, Robert, Ezra Aspland and Lionel Armitstead

Safer Together



Seniors Enquiry Line:

The Seniors Enquiry Line is a free, statewide information and referral service. This program provides support and information to Queensland seniors, their families, friends, and carers. One call will put you in touch with information on: concessions, social activities, household assistance, retirement accommodation, financial and legal matters, health, education and transport.

Call 1300 135 500 or visit www.seniorenquiryline.com.au.



Elder Abuse Support:

The Queensland Police Service is committed to working with senior residents and the community to prevent elder abuse. This type of abuse can manifest in many ways, including emotional, psychological, financial, physical, sexual, and neglectful behaviours. Unfortunately, elder abuse is significantly under-reported, and in many instances, it is perpetrated by close family members. Elder abuse is everyone's responsibility and by working together, it can be prevented. The Queensland Elder Abuse Helpline is a contact point for anyone who experiences, witnesses or suspects that an older person is being abused by someone they know and trust.

Call 1300 651 192 or visit www.eapu.com.au/elder-abuse-helpline.

Information for Queensland's Senior Residents

Everyone has the right to feel safe and be safe.

This resource has been developed by the Queensland Police Service to provide support and guidance to Queensland's senior residents.



Layered Security Assessment Approach:

The Queensland Police Service has developed the Layered Security Assessment Approach to assist communities in protecting their properties. By regularly assessing your home security, introducing targeted security measures, and adjusting everyday habits, you can enhance the safety of your home. Effective home security can be achieved by adhering to the following key principles:

- Make it easy for an offender to be seen
- Make it difficult for an offender to gain entry
- Make it difficult for an offender to exit with your property
- Make it difficult for an offender to gain benefit from your property



To access the Layered Security Assessment Approach and review your home security, scan the QR code or visit www.police.qld.gov.au/HomeSecurity.

60th Wedding Anniversary: Allan Keith Wallace and Robyn Frances Kirwan



A Journey of Love: The Marriage of Allan Keith Wallace and Robyn Frances Kirwan

On April 23, 1966, Allan Keith Wallace and Robyn Frances Kirwan exchanged vows, officiated by Canon Thawley at St. Margaret's C.E.G.S. Chapel on Lapraik Street, Albion Heights. Their celebration continued at the National Hotel in Petrie Bight, Brisbane. Their story began in December 1960 when they met at the Bundaleer picnic grounds during a Remington Christmas event. At that time, Allan was a 20-year-old apprentice typewriter mechanic with Chartres/Remington in the Valley, while Robyn, nearly 16, had just completed her Junior examination and left school.

Their romance blossomed over a long distance, as Allan worked in Remington's Rockhampton office, and Robyn lived in Greenslopes, Brisbane. Being a Coorparoo boy, Allan frequently drove from Rockhampton to visit his parents and Robyn.

In 1964, Allan sought permission from Robyn's father, Len Kirwan, to marry her. Len's response was, "As long as she is not married before she is twenty-one." Their engagement took place in December 1964, leading to their wedding in April 1966.

Robyn handled all the arrangements in Brisbane, facing a challenge when 1966 became the year of Decimal Currency Conversion, with staff prohibited from taking leave. Robyn's father was in poor health, raising concerns about whether he could walk her down the aisle later that year. As a result, an earlier wedding date was pursued. However, it couldn't fall during Lent or Easter, nor coincide with the Sisters of the Sacred Advent's retreat.

Additionally, it had to be a long weekend to allow Allan to travel from Rockhampton to marry on Saturday and return on Sunday. The earliest possible date was the ANZAC Day long weekend.

Reflecting on Sixty Years of Memories

Now, sixty years later, we fondly reminisce about that special day. Out of the original bridal party of six, only three remain with us, and unfortunately, they won't be able to join us on the 23rd. However, we cherish the joyful memories we created together.

The marriage brought forth two wonderful children, Leanne and Matthew, who are now in their fifties. They have blessed us with three delightful grandchildren: Conlan, Sara, and James. Additionally, when Matthew married Nichola, we welcomed another grandchild, Imogen, making it four in total.

P.S. This message comes from Robyn: Over the years, like many parents, we have actively engaged in our children's lives, supporting them through kindergarten, primary and secondary school, and university. We've participated in their various activities—be it sports, scouts, church, or whatever else captured their interest—which has led us to meet many beautiful and intriguing people. We thought our involvement might be winding down, but when Allan joined the MGMS, we discovered a whole new community of lovely individuals. Thank you for everything you've done and for keeping Allan engaged and motivated to keep "one foot after the other."

Robyn.

Allan Wallace. MGMShed No. 43

HUMOUR



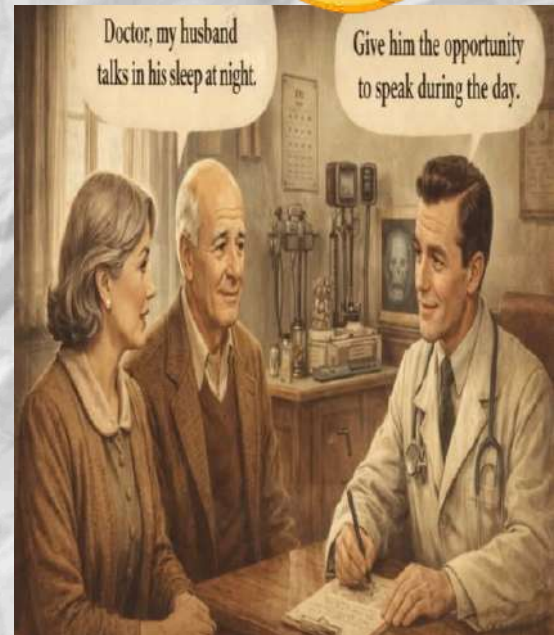
The Vespa looks like it saw the price of fuel

I'm old enough to remember this.



I can smell it now!

This is the funniest Vespa I've ever seen



Doctor, my husband talks in his sleep at night.

Give him the opportunity to speak during the day.

Last week I filled up my car for \$110 and drove off without paying. Today in court I was fined \$75 Stay tuned for more money saving tips

I REALLY NEED TO GET A NEW PAIR OF GLASSES.



Paddy goes for a job at a chemical factory.

Keep Calm And Oh, Dear & Enjoy Some Cakes

The factory manager asks, "Have you worked with chemicals before?"

"Yes!" Paddy replies.

The manager asks, "Can you tell me what nitrate is?"

Paddy replies, "I'm hoping its going to be time and a half"

Took me all day yesterday but finally finished. A pallet I made from an old coffee table.



HOW STUPID CAN THEY BE



NEITHER OF THEM ARE WEARING GOGGLES



Tesla owners attempting to go on a long roadtrip:



Boys never actually grow up. Their toys just get bigger and more expensive.

Amish farmer washing his classic Mustang.



Apparently mission accomplished

Straits of Hormuz



A completely naked woman robbed a bank and got away with it. No one could remember her face.

May 2026

Saturday, May 2, NB# 2:45 for 3 pm: Arvo Entertainment Group bring a plate of food to share if interested.

"Woodworking Introduction" 8.00 am to 12.00 pm on Thursdays. The wood-shop area is shared only with the wood-turning group.at these times to limit noise during instruction.

Monday	Tuesday	Wednesday	Thursday	Friday
April 27 8:00 Woodturning 8:00 Own woodwork 8:30 Laser 9:00 Metal scrolling 9:00 Cards 9:00 Chess 12:00 Toy-making	28 8:00 Leatherwork 8:00 Welding training 8:00 Guitar lessons (2015/18/19/20) 8:00 Own woodwork 8:30 Guitar (2021/22/24) 10:30 Jam session 12:30 Woodcarving 12:30 Guitar 1:00 HeartFIT	29 8:00 Intermediate woodwork 8:00 Karaoke 8:30 Laser 9:00 Writers 9:30 Emerging technologies (Vcarve & CNC router) 12:00 Woodturning 1:00 WOC Meeting	30 8:00 Woodturning learners 8:00 Woodworking Introduction 9:00 Cartooning 12:45 Carpet Bowls	May 1 8:00 Small engines 8:30 Laser 9:00 Art/painting 12:00 Ukulele Jam 1:00 HeartFIT <i>(Shed Rec Rm)</i>
4 Labour Day <i>Shed closed</i>	5 8:00 Leatherwork 8:00 Welding training 8:00 Guitar lessons (2015/18/19/20) 8:00 Own woodwork 8:30 Guitar (2021/22/24) 10:00 Jam session 12:30 Woodcarving 1:00 HeartFIT	6 8:00 Intermediate woodwork 8:00 Karaoke 8:30 Laser 9:00 Writers 9:30 Emerging technologies (Vcarve & CNC router) 12:00 Woodturning 1:00 MC meeting	7 8:00 Woodturning learners 8:00 Woodworking Introduction 9:00 Cartooning 10:30 Cooking 12:45 Carpet Bowls	8 8:00 Small engines 8:30 Laser 9:00 Art/painting 12:00 Ukulele Jam 1:00 HeartFIT <i>(Shed Rec Rm)</i>
11 Social Meeting <i>Shed Recreation Room</i> <i>10:15 for 10:30:</i> <i>\$8 for lunch</i>	12 8:00 Leatherwork 8:00 Welding training 8:00 Guitar lessons (2015/18/19/20) 8:00 Own woodwork 8:30 Guitar (2021/22/24) 10:30 Jam session 12:30 Woodcarving 1:00 HeartFIT	13 8:00 Intermediate woodwork 8:00 Karaoke 8:30 Laser 9:00 Welfare 9:00 Writers 9:30 Emerging technologies (Vcarve & CNC router) 10:00 Travel group Broadwater Park 12:00 Woodturning	14 8:00 Woodturning learners 8:00 Woodworking Introduction 9:00 Cartooning 12:45 Carpet Bowls 12:30 Photography	15 8:00 Small engines 8:30 Laser 9:00 Art/painting 12:00 Ukulele Jam 1:00 HeartFIT <i>(Shed Rec Rm)</i>
18 8:00 Induction 8:00 Woodturning 8:00 Own woodwork 8:30 Laser 9:00 Metal scrolling 9:00 Cards 9:00 Chess 10:30 Sausage sizzle guest speaker \$5 12:00 Toy-making	19 8:00 Leatherwork 8:00 Welding training 8:00 Guitar lessons (2015/18/19/20) 8:00 Own woodwork 8:30 Guitar (2021/22/24) 10:30 Jam session 12:30 Woodcarving 1:00 HeartFIT	20 8:00 Intermediate woodwork 8:00 Karaoke 8:30 Laser 9:00 Writers 9:30 Emerging technologies (Vcarve & CNC router) 12:00 Woodturning 1:00 WOC meeting	21 8:00 Woodturning learners 8:00 Woodworking Introduction 9:00 Cartooning 10:00 Native Bees 10:30 Cooking 12:45 Carpet Bowls	22 8:00 Small engines 8:30 Laser 9:00 Art/painting 12:00 Ukulele Jam 1:00 HeartFIT <i>(Shed Rec Rm)</i>
27 8:00 Woodturning 8:00 Own woodwork 8:30 Laser 9:00 Metal scrolling 9:00 Cards 9:00 Chess 12:00 Toy-making 12:00 Emerging Technologies	28 8:00 Leatherwork 8:00 Welding training 8:00 Guitar lessons (2015/18/19/20) 8:00 Own woodwork 8:30 Guitar (2021/22/24) 10:30 Jam session 12:30 Woodcarving 12:30 Guitar 1:00 HeartFIT	29 8:00 Intermediate woodwork 8:00 Karaoke 8:30 Laser 9:00 Writers 9:30 Emerging technologies (Vcarve & CNC router) 12:00 Woodturning	30 8:00 Woodturning learners 8:00 Woodworking Introduction 9:00 Cartooning 12:45 Carpet Bowls	June 1 8:00 Small engines 8:30 Laser 9:00 Art/painting 12:00 Ukulele Jam 1:00 HeartFIT <i>(Shed Rec Rm)</i>