

SHED TALK

THE NEWSLETTER OF THE
MT. GRAVATT MEN'S SHED

VOLUME 16 MARCH 2025 NO.3



The above photo was taken at Maria Island, Tasmania.

The photo is titled "Man verses crab".

I was on my knees and elbows for about 47 minutes, as the hermit crab poked his head out and back until he felt safe enough to venture out this far.

The crab survived without any injury, but that was not the case with my knees and elbows.

Nikon D3 ISO 800 1/125th sec at f8 hand held. Nikon Macro 60mm 2.8 lens.

Often to get the photo it takes patience and then some.

Adrian Roberts - Photography Group

Next photo shoot - 8:00 am Thursday 10 April meet in carpark off Wynnum Rd.

Minnippi Parklands, Tingalpa.

IN THIS ISSUE

[President's Ponderings](#)

[Letters to Editor](#)

[Buddhist Thrones / Chesterson's Fence](#)

[Hell / NBN / Singalong](#)

[Around the Shed](#)

[Music / Chess](#)

[Lindeberg Cartoon Corner](#)

[Elections](#)

[Art](#)

[Social Meeting Minutes](#)

[Humour](#)

[April Calendar](#)

Vision

To provide a facility where men of all ages can feel comfortable and gather together to spend time socially, as well as in a practical manner, by participating in constructive endeavours that develop self esteem.

PRINTED COURTESY OF COUNCILLOR KRISTA ADAMS
& THE HOLLAND PARK WARD OFFICE

About us

Patrons

Body Dr Brian Kable

Mind Prof Grant Devilly

Spirit Rt Rev Doug Stevens

Management Committee

President Peter Tyley

Secretary Neville O'Brien

Assistant Secretary Lionel Armitstead

Minutes Secretary

Treasurer John Wild

MC Members Bart McKnight,

Kevin Schneidewin

Area Co-Ordinators

Building & Grounds Stephen Ord

Workshop Projects Fred Darvill

Community

Projects Bart McKnight

Office Jim Wiseman

Recreation Room Colin Smith

Workshop Lloyd Akeroyd

Welfare Steve Fluerty

Other

Music Coordinator Terry Thomson

IT Coordinator Bruce Conmee

Deputy IT Coordinator Ross Hall

Assistant Treasurer John Bettenay

Assistant Welfare Bruce Stafford

Woodworking Facilitator Lloyd Akeroyd

Maintenance Subcommittee Dave Tate

Wood Machinery Lloyd Akeroyd

Immediate Past President John Wicks

Test & Tag Brad Gibson, Nev O'Brien

Editorial Team

Editor Wayne Hansen

Proof Readers Neil McPhail, Reuben Egan

Editorial Assistants Kim Tvede

Email newsletter@mtgravattmensshed.org.au

Mail

Secretary

Post Box 239

Mansfield Qld 4122

Phone Shed Office (07) 3343 2216

www.mtgravattmensshed.org

Email: secretary@mtgravattmensshed.org.au



President's Ponderings

Hello shedders,

Here I am back again, welcoming you all. I want to say a few words about an organisation called **Vans for Nans**. People donate vans or mobile homes and they have people who do them up and we have a couple of members who help. When the project is finished, they are given to older homeless women. I believe that a couple of councils have parks for them to live safely. Any help would be greatly appreciated.

It has come to my attention from a few members stating that there are some items missing from the workshop. I can only hope that they are misplaced and not stolen. If anyone needs help with wanting tools to use please let me know and I will certainly help where I can. What I have noticed that some tools are being misused resulting in damage to the tool. Now anyone who wants to use the Festools will need Fred Darvill's permission.

Well I hope everyone is safe as Alfred has done a number on us. Regrettably I have received from our Secretary his resignation starting from 30th June. It will be a loss to me and the shed so thank you Nev for your valuable time spent here.



Peter and Trevor Patrick with the new Sakura Stitch leather sewing machine

Peter Tyley

0458 553 330

peter.tyley@bigpond.com



We all have the power to change at least one thing a day... Please make it your underwear.

The Role of Secretary

The secretary is arguably the most important office-holder in an association. In Queensland (but not in some other states), the secretary is also the public officer (more about this at another time).

The secretary usually acts at the direction of the management committee (MC). But the secretary may call a special general meeting (SGM) independently of the MC.[1] Does this mean that s/he may act contrary to the wishes of the MC in this case? Yes: but the secretary is not overruling the MC; rather, s/he is referring a matter of concern to the MC's boss – the members of the association.

The model rules permit ordinary members to elect the secretary to office at a general meeting.[2] The model rules also permit the MC to appoint the secretary.[3] In the past, appointment enabled the secretary to be paid if s/he were not a member of the association, but this restriction no longer applies.[4]

In most Queensland associations, the secretary is elected. But at Mount Gravatt Men's Shed (MGMS), the secretary is appointed. The reason for this is unclear (the MGMS secretary has never been paid).

Appointing the secretary advantages the MC which can dismiss the office-holder.[1] But appointing the secretary disadvantages the ordinary members of the association who are unable to exercise their right to vote for an office-holder who cannot be dismissed by the MC.[2]

- [1] Rule 17
- [2] Rule 15(1)(a)
- [3] Rule 15(1)(b)
- [4] See Rule 46(4)(a)
- [5] Rule 16(1)
- [6] Rule 20(3)

Phil Vardy

Footnote added by author

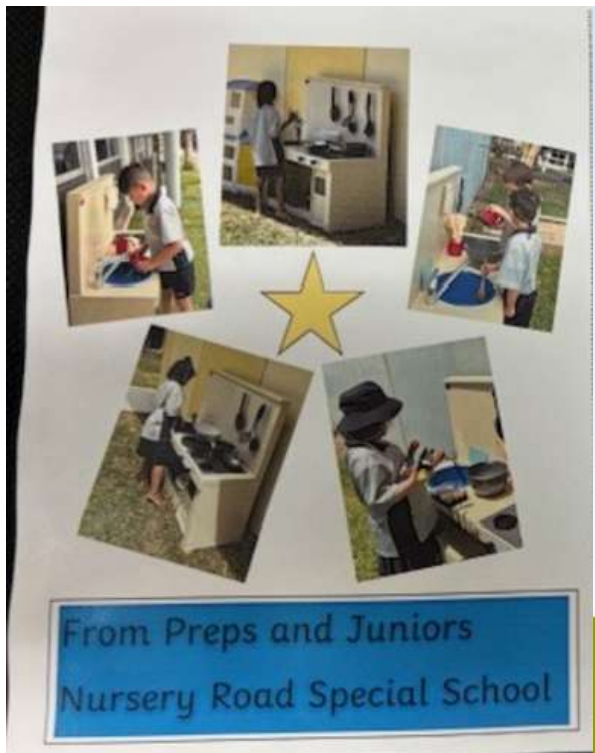
In a draft of this newsletter, I was saddened to learn about the secretary's resignation. Nev has been a stalwart of the shed for longer than most of us can remember. He has been one of the best secretaries that MGMS has appointed. He will be missed. Thank you Nev. PV



Hi Fred,
Thank you all once again for the Mud Kitchens you made. The Preppies and Junior students are really enjoying playing with them.

I have attached a thank you card for you and I will pop the original in the post to you.

Kind regards
Angela.



St. Barts
Anglican
Church
Mt Gravatt

We gather for worship Every
Sunday at 7.00am & 9.00 am



ROTARY CLUB OF MOUNT GRAVATT Inc.



PROUDLY SUPPORTS

THE MOUNT GRAVATT MEN'S SHED Inc.

Rotary Club of Mt. Gravatt is a platinum sponsor of the Shed.



*Striving to be a Christ
Centred Family Community*

HERTFORD STREET BAPTIST CHURCH

Cnr of Hertford & Dupre Sts,
Upper Mount Gravatt. 3343 6405

Service Time 9:00am

MGMS Bronze Sponsor

Buddhist Throne Seat



Dear Fred, Patrick, Skinny and Ross and all,

Thank you so much for getting our throne backs and bases together so quickly for us. Here is a photo of one them in use.

Warmest wishes, Miffi.

Miffi Maxmillion
(Spiritual Program Co-ordinator)

Langri Tangpa Centre Inc.

*"May I purify an ocean of worlds, may I free an ocean of beings, may I clearly see an ocean of Dharma, may I realise an ocean of pristine wisdom." --
The King of Prayers*



Chesterson's Fence



What we can learn from Chesterson's Fence?

G. K. Chesterson (1874-1936) created Father Brown, the character in the British period detective series currently shown on ABC TV.

Known for his many wise sayings, Chesterton is credited with the maxim now known as Chesterton's Fence: *Never remove something unless you know why it was originally built.*

The maxim derives from Chesterton's description of an old fence that should not be torn down until one understands why the fence was originally put up. Complete demolition might have unintended consequences. In advising caution, Chesterton was advocating a conservative approach. But what has this to do with Mount Gravatt Men's Shed (MGMS)?

The original MGMS constitution was based on the **model rules**, part of the Associations Incorporation Regulation 1999 (Qld.). The model rules are the result of centuries of experience. But in 2017, we changed the MGMS constitution and introduced provisions that do not serve the interests of the shed.

At the Special General Meeting held late last year, there was scant support for retaining the changed constitution. As the secretary later wrote, 'Not even close'. It's time to rebuild Chesterton's fence and correct the mistakes of the past. We should adopt the **model rules** as the constitution of MGMS as soon as practical.

Ed.

HELL EXPLAINED BY CHEMISTRY STUDENT

The following is an actual question given on a University of Washington chemistry mid-term paper.

The answer by one student was so "profound" that the professor shared it with colleagues, via the Internet, which is, of course, why we now have the pleasure of enjoying it as well:

Bonus Question: Is Hell exothermic (gives off heat) or endothermic (absorbs heat)?

Most of the students wrote proofs of their beliefs using Boyle's Law (gas cools when it expands and heats when it is compressed) or some variant.

One student, however, wrote the following:

First, we need to know how the mass of Hell is changing in time. So we need to know the rate at which souls are moving into Hell and the rate at which they are leaving. I think that we can safely assume that once a soul gets to Hell, it will not leave. Therefore, no souls are leaving. As for how many souls are entering Hell, let's look at the different religions that exist in the world today.

Most of these religions state that if you are not a member of their religion, you will go to Hell. Since there is more than one of these religions and since people do not belong to more than one religion, we can project that all souls go to

Hell. With birth and death rates as they are, we can expect the number of souls in Hell to increase exponentially. Now, we look at the rate of change of the volume in Hell because Boyle's Law states that in order for the temperature and pressure in Hell to stay the same, the volume of Hell has to expand proportionately as souls are added.

This gives two possibilities:

1. If Hell is expanding at a slower rate than the rate at which souls enter Hell, then the temperature and pressure in Hell will increase until all Hell breaks loose.
2. If Hell is expanding at a rate faster than the increase of souls in Hell, then the temperature and pressure will drop until Hell freezes over.

So which is it?

If we accept the postulate given to me by Teresa during my Freshman year that, "It will be a cold day in Hell before I sleep with you," and take into account the fact that I slept with her last night, then number two must be true, and thus I am sure that Hell is exothermic and has already frozen over. The corollary of this theory is that since Hell has frozen over, it follows that it is not accepting any more souls and is therefore, extinct.....leaving only Heaven, thereby proving the existence of a divine being which explains why, last night, Teresa kept shouting "**Oh my God.**"

THIS STUDENT RECEIVED AN A+!

Emailed by Neil Hansen

NBN New Building News

NBN news

The March management Committee agreed to establish a working sub committee to investigate further the possibility of MGMS shed extension.

This working committee to be made up of members/coordinators of the shed.

Watch this space for further updates.

Dave Tate

Men's Shed Singalong

The music section of our shed is planning a singalong night for Thursday 17 April.

We invite all who are interested to arrive at 6:30pm ready for a 7pm start. We should finish by 9:30pm.

Please bring along a plate of food to share.

Admission will be by gold coins.

Some of our musicians are preparing a list of some thirty songs.

Surely we will have some visitors from Mansfield Melody Makers choir. Choir pianist, Gwen Ward, will assist the shed band in providing music for the night.

Please remember the date - 17 April. You are welcome to bring your friends, if you wish.

We always have a fine, fun night and this will be no exception. We hope to see you there!

Laurie O'Brien



Australian Government

BUILDING OUR FUTURE



Queensland
Government

Mount Gravatt Men's Shed Inc.

Proudly supported by



Dedicated to a better Brisbane

Around the Shed



Bruce Conmee - IT coordinator



Geneva & Tony



Jim Dark with leather vase



Small engine group



Bob Nunn - work in progress



Allan Fedrick



Geoff - bag commission



"Shed Tones"



Guitar Group - "Shed Beats" rehearsing in the girl guides hut



Laurie with his three year old grandson Cooper playing harmonicas



*Freedom
Matthew at Tangalooma*



*David Stubbs'
70th birthday cake*



*Bill Simpson age 83
The MGMS first newsletter editor*



Tim Spedding



Phil, Paul & Ted



HeartFIT warming up.

MUSIC GUITAR GROUP

Terry Thomson - Leader



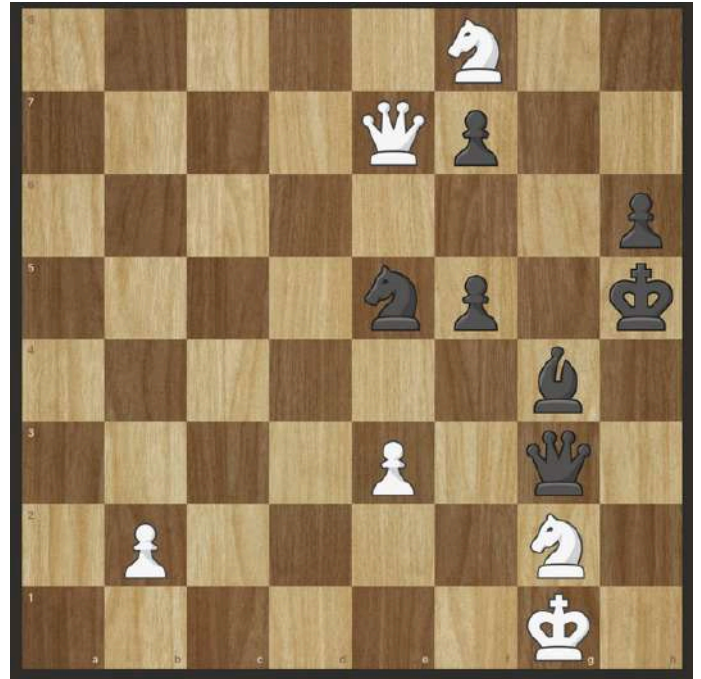
Photo above shows some of the members of the Tuesday morning "JAM Group", in a relaxed mood but ready to get into it, with an appreciative audience sitting at the tables in the recreation room. From the left is Peter Novak, Hugh Smith, and Jim Anderson, front standing Terry Thomson, Bruce Boyce, Dave Williamson, Basil Wood and Ed Fernando. Kornel Banvolgyi wasn't in the picture because he was on the other side of the camera. Terry had just informed the group of the fast approaching monthly social and the need for more musicians to come and play. Also of a "Song Writing Competition" for all Queensland Shedders by the Maroochy Men's Shed and this is their current project. Full details are available on the website at maroochymensshed.com.au/songwriting. When they got

underway Basil led the group and Ed operated the computer and projected the music and songs up onto the big screen and they did a fantastic job. Everyone then got in to play and sing some songs with much enthusiasm and gusto. The result being that all the musicians really enjoyed the session. The songs included "Any Dream Will Do", "In the Middle of the Island", "I Want to Dance With You", "To Her Door", "Brown Eyed Girl", "Mr Tamborine Man", "Under The Boardwalk", "Corrina Corrina" and many more. One of the many shed members who were sitting in the recreation room and listening said "I don't have to pay money to go to a concert I just have to come here." I must add that there was much applause from this group who formed the audience.

The 2024 guitar class which had been running on Tuesday afternoons from 12.30pm – 2.00pm was suspended due to lack of numbers. However there has been some inquiries and interest from three people asking when it will recommence. I will start again but need some more participants to make this a viable activity. So if people are interested please leave a note "Attention Terry Thomson Guitar Class" with your name, phone number and e-mail address at the shed office and I will take it from there.

Chess Group

Alan Highman



What a month that was. Now that the threat of Alfred has passed and I believe there was no major damage to any fellow shedders we can get back to normal. Things have been quiet on the chess front but hopefully that will pick up soon. We have been missing some of our regular players so please, if you are interested at all, come along and have a friendly game. We are more than happy to coach you along if you aren't that familiar with the game.

Last month's puzzle solution:

Rh3 to h5 P-h6

Ra5 KxP

Rg3 to h3 mate

This month's puzzle is again, white to move and mate in 3.

Good luck!

**My wife and I decided
we don't want children.
It was a difficult
decision, but we're
telling them tonight.**



ONE LAST FLING...

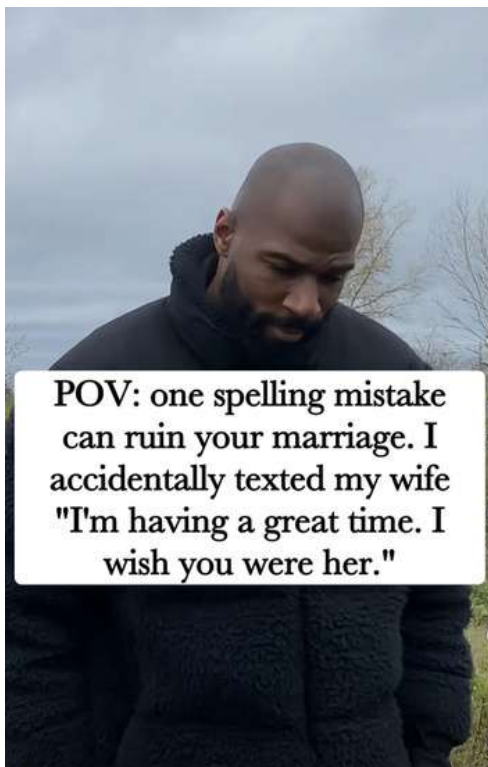


"GO ON, SPEND TWO HUNDRED GRAND OF THE KIDS' INHERITANCE, YOU'LL FEEL LIKE A KID AGAIN, AND THE ENVY OF THE MEN'S SHED!!"



Cover

A lot of women say their husband never listens to them. I am proud to say I have never heard my wife say that.



POV: one spelling mistake can ruin your marriage. I accidentally texted my wife "I'm having a great time. I wish you were her."

Why do men fart more often than women?
Because women don't close their mouths long enough to build up the pressure..

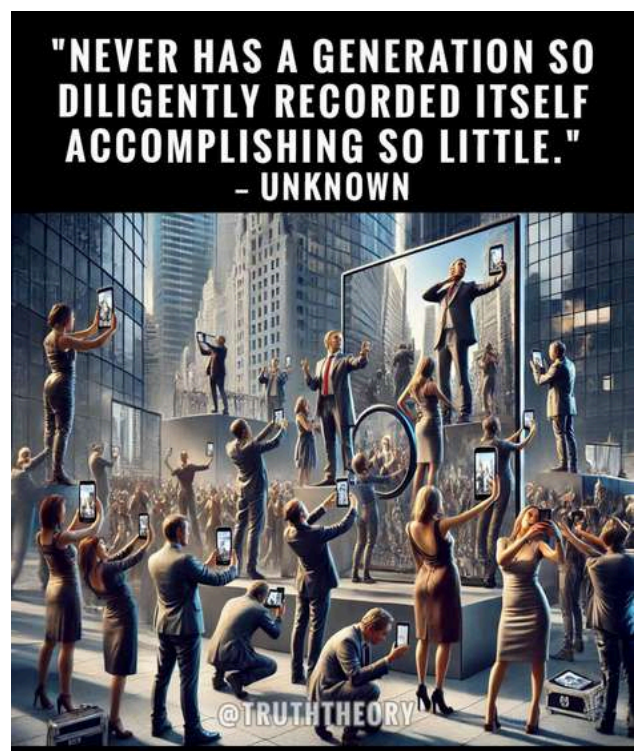
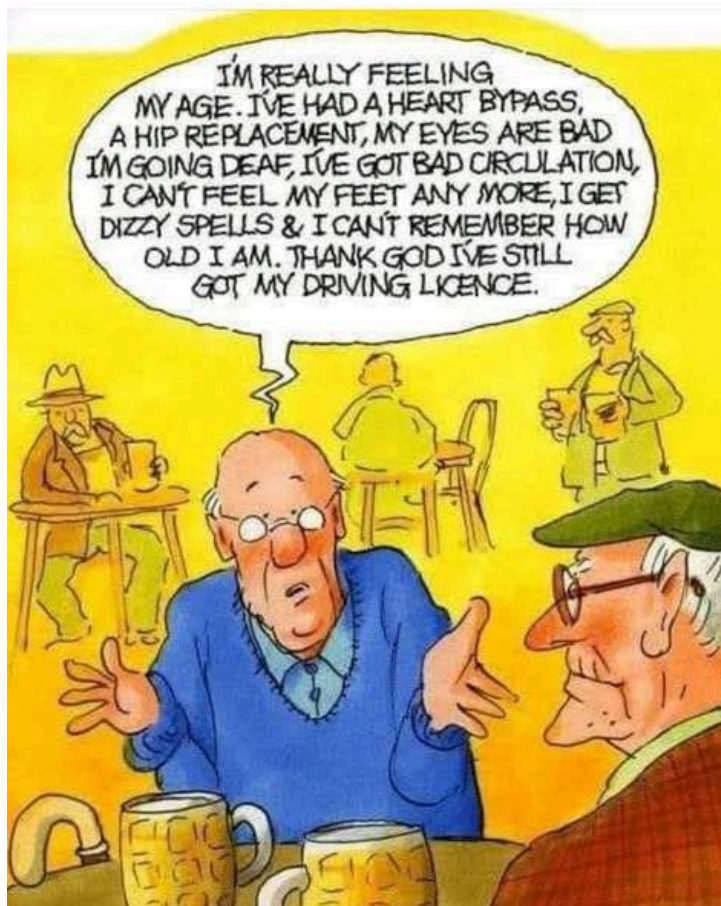




At the SGM held in December 2024, the shed members voted to allow the Management Committee numbers to increase from seven to nine. This election, on Thursday 3 April at 9:00 a.m. in the shed recreation room, is to allow the election of two extra members to the Management Committee. Please find attached the nominated members - also on shed noticeboard and a set to view in the shed office. Proxy form is also attached and available in the shed office. Click to [Download Proxy Form](#). [Bios](#)

These members have nominated for the two Management Committee positions:

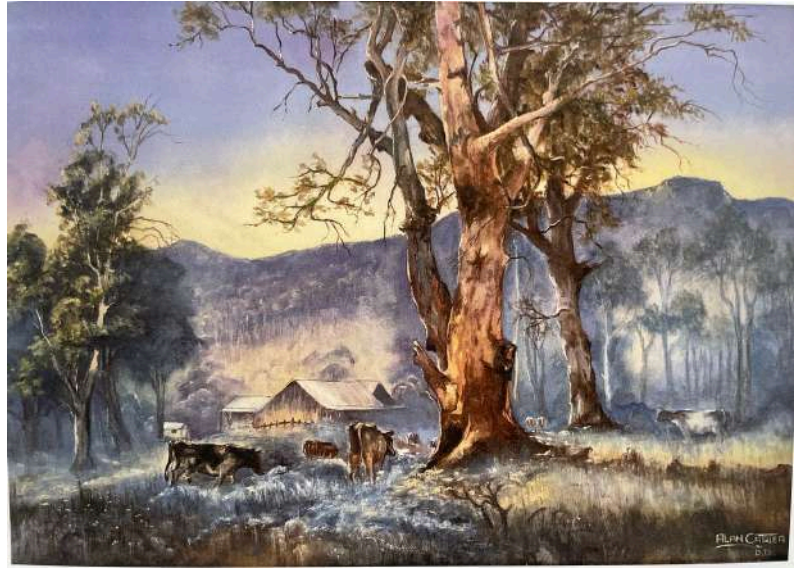
- **Phil VARDY**
- **Skinny (Glen) BURKE**
- **Bruce CONMEE**
- **Jim WISEMAN**



Art / Painting Group



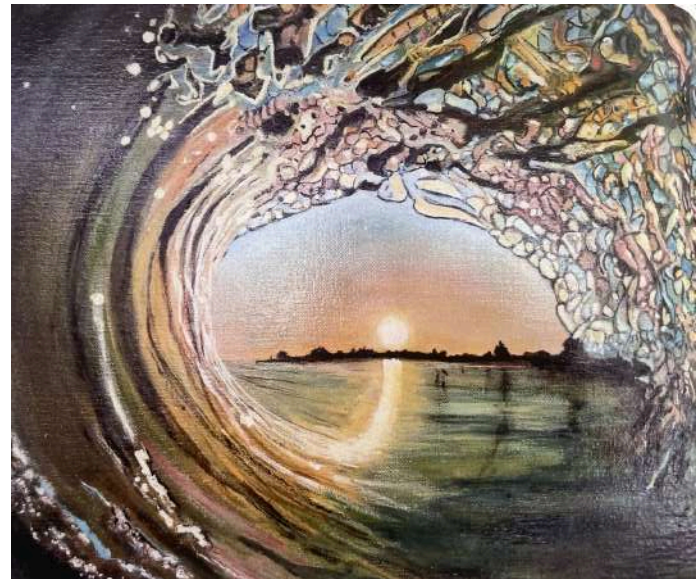
John Raines - work in progress



Alan Carter



Alan Carter



Gavin Taylor



Wayne Hansen



Bill Hooper
REAL ESTATE

Specialising in Property Management and Sales
in the greater Mount Gravatt Area

Call Bill Hooper today on 3349 8844

Bill Hooper Real Estate is a Proud Sponsor of
Mount Gravatt Men's Shed



Social Meeting Minutes

3rd March 2025

President : Peter Tyley

A SGM on 3rd April will ask for nominations from the floor if there are insufficient written nominations submitted previously for two new members to add to the Management Committee with voting rights.

Treasurer's Report: John Wild

Reports for the 8 months ended February 25 tabled for comment and to be ratified at the next Management Committee meeting.

In summary the result of \$22,523 (Budget \$21,260) (Year to Date & before Grant Income & Expenditure) has mainly come about due to:

- Membership renewals \$16,854
- New Memberships \$2,764
- Cubby House & other raffles \$7,484
- Expenditure over budget (\$828) due to electrical work & floor cleaning.

Total Banking Inc Floats & Term Deposits = \$199,087

Net Assets = \$853,243

Other Comments

I have been working with Stephen Spinks on the Asset Register to ensure we have correct cover in our insurance renewal which was lodged during February. Pleased to see only a 5% increase seeing we increased the values of buildings, equipment & membership numbers.

We are now setting up a back to base system with Modern Security so as we have 24-hour security over the Shed. A few teething problems but hopefully up & running this week.

John Wild

Treasurer

Welfare: Bruce Stafford

Memorial Service details will be sent to families of passed members. An information meeting for those interested will be held on 10th May.

We acknowledge the passing of Des Binstead #908 RIP 16.02.25.

Building & Grounds: Dave Tate

The Bee group want to put a cover over the hives in the garden area and a request for some storage.

Dave suggested the Bee group clean out some rubbish from the garden shed then use some of the ply currently stored in the workshop to build a suitable cupboard.

Workshop: Fred Darvill

Training is required for members using machinery as damage costing expensive repairs. Please do not operate without formal training by activity leader.

Requests for work:

- Rochedale East School - Stage props for Matilda musical
- Nursery Rd State Special School - make 2 x Mud Kitchens
- Market Trolleys repair top and wheels
- School Chocolate frames

Guest Speaker - Anthony Power



How does this Program Help?

Care finders support vulnerable people who:

- are unable to access services without intensive support
- do not have a family member or friends who help

Care finders can help people:

- understand what aged care services are available
- set up an assessment and find and choose services

A Care Finder can help someone with

- talking to My Aged Care and arranging an assessment, attending and providing support at the assessment
- finding and short-listing aged care providers in their area, completing forms and understanding aged care service agreements
- checking-in once services are up and running
- problem solving other challenges and connecting to supports in the community

Who is eligible?

Care finders specifically help vulnerable older Aussies who need intensive assistance to access aged care and other supports.

To receive care finder supports, a person is

- isolated and does not have a carer or support person they feel comfortable to act on their behalf
- eligible for government funded aged care
- may have difficulty communicating
- find it difficult to understand information and making decisions
- may be left in an unsafe situation if they do not receive services

Care finder services are provided at no cost as it is fully funded through Brisbane South PHN.

Projects: Bart McKnight

- Garage Sale at the Shed 23rd March
- Bunnings Sausage Sizzle 29th March
- Quilters Sausage Sizzle 14th May

Music: Basil Wood

Need for some (2 or 3 if possible) more students so the restarting of the afternoon guitar lessons is a viable prospect. Groups doing well. New faces at jam and some old ones have come back. Shed has a new tablet. IT working on it. Rec room screen works well.

First Aid Training: Jim Wiseman

Course scheduled for mid April. Nominations required and course is free for members. Wives are welcome but will need to pay.



Guest Speakers:

Details need to be advertised through emails and the Shed Newsletter. This should assist increasing numbers at meetings and sausage sizzles.

Newsletter: Wayne Hansen

Feedback from one member was the newsletter contained too many photos. When asked the vast majority of members overwhelmingly supported the large number and format. The jokes section also received very favourable comments.

“What the body does in a day” article generated concerns regarding the validity of some of the stated facts. Using the Encyclopedial Britannia app I checked most of the statements and found many of them to be understated. The volume of blood pumped by the heart each day was 2500 gallons which was 500 more than quoted in the article. The number of blinks per day was 13 K to 16 K not 28 K as published.

Overall the article was accurate and very informative.

Thanks to Kevin Schneidewin.

SHED TALK
THE NEWSLETTER OF THE
MT. GRAVATT MEN'S SHED
VOLUME 11 FEBRUARY 2025 NO.2

**MOUNT GRAVATT
MEN'S SHED Inc.**
Men Making a Difference

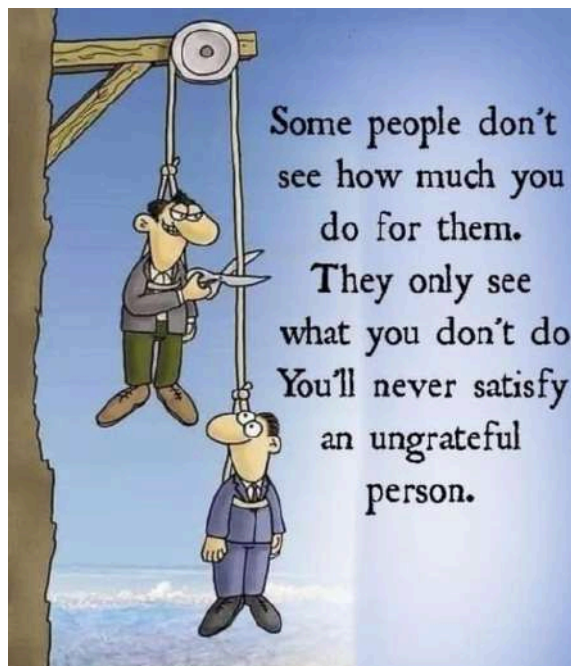
IN THIS ISSUE

- President's Profile
- Letters to Editor
- News of the Shed
- Next Meetings
- Transportation Issues
- What a Soft Day
- After Dinner
- Art - Paintings
- Chess Club
- Electronics Group
- Music Culture Group
- Social Activities Minutes
- Leisure & Entertainment
- Entertainment
- Humour
- Match Calendar

Vision
To provide a facility where men of all ages can feel comfortable and gather together to spend time socially, as well as in a practical manner, by participating in constructive endeavours that develop self esteem.

PRINTED COURTESY OF COUNCILLOR KRISTA ADAMS & THE HOLLAND PARK WARD OFFICE

"War is a place where young people who don't know each other and don't hate each other, kill each other, based on decisions made by old people who know each other and hate each other, but don't kill each other..."



Help fill potholes



HUMOUR



when you come home from the pub 4 hours late and she gives you this look



The best named divorce lawyers in history...



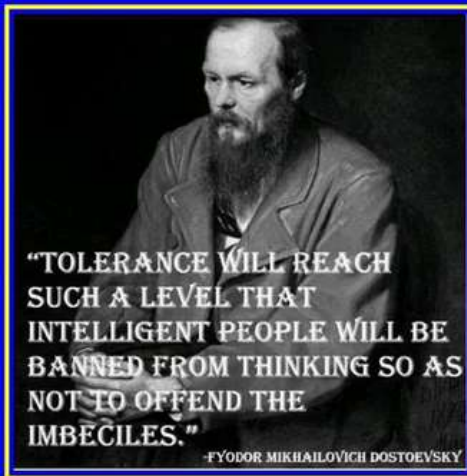
Time is free but it is priceless. You can't own it, but you can use it. You can't save it, but you can spend it. Once you have lost it, you can't ever get it back.



Wife crashed the car again today..... She told the police the man she collided with was on his mobile phone and drinking can of beer ! Police said he can do what he likes in his own living room !



FUN FACT: a majority of archeologists are women due to their natural ability to dig up the past



"DUNNING-KRUGER EFFECT."

... a type of cognitive bias, where people with little expertise or ability assume they have superior expertise or ability. This overestimation occurs as a result of the fact that they don't have enough knowledge to know they don't have enough knowledge.



In 1963, the Bronx Zoo had an exhibit called "The Most Dangerous Animal in the World" It was a mirror.

Time..

is the only currency you spend without ever knowing your balance.

Use it wisely.

6 BEST DOCTORS In The WORLD



And you thought rear parking sensors were a newish invention...



For the first time in history, you can simply post, "He's an idiot," and 90% of the world will know whom you're talking about.

I sat in my Haircutters chair and said "Make me look sexy."
She started drinking.....

I was so suspicious and paranoid about my wife having an affair, that we moved to a new town 700 miles away.
I couldn't believe my luck when we still managed to keep the same gardener.

Me on my way to ask my wife what's wrong with her



Good to see people have a basic understanding of how railroads work....



Me: Meet my girlfriend
Mom: You deserve better, don't settle for this
Me: But mom I love her
Mom: I'm talking to her

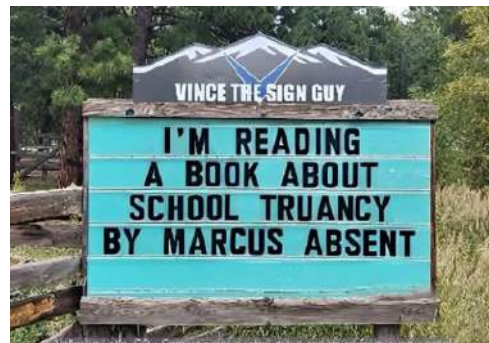


Behind every angry woman..



...stands a man who has absolutely no idea what he did wrong

Keith Richards teaching Willie Nelson how play guitar



Today i put vodka in the lawnmower because I had No Petrol 🛢️
Now the grass is half cut 😊



I WAS GETTING IN BED, SHE SAID, "YOU'RE DRUNK. I SAID "HOW DO YOU KNOW THAT?" SHE SAID, "YOU LIVE NEXT DOOR." 🤪🤪🤪



I Told My Wife I Wanted To Be Cremated. She Made An Appointment For Tuesday. ❤️💙

April 2025

Saturday 5 April NB# 2:45 for 3 pm: Arvo Entertainment Group bring a plate of food to share if interested.

Monday	Tuesday	Wednesday	Thursday	Friday
31 March 8:00 Woodturning 8:00 Own woodwork 8:30 Laser 9:00 Metal scrolling 9:00 Cards 9:00 Chess 12:00 Toy-making	April 1 8:30 Leatherwork 8:00 Guitar lessons (2015/18/19/20) 8:00 Own woodwork 8:30 Guitar (2021-22) 10:00 Jam session 12:30 Woodcarving 12:30 Guitar (2024) 1:00 HeartFIT	2 8:00 Intermediate woodwork 8:30 Laser 9:00 Writers 9:30 Emerging technologies (Vcarve & CNC router) 12:00 Woodturning	3 8:00 Woodturning learners 8:00 Woodworking Introduction 9:00 SGM elections – recreation room 9:00 Cartooning 12:45 Carpet Bowls	4 8:00 Small engines 8:30 Laser 9:00 Art/painting 12:00 Ukulele Jam 1:00 Welding 1:00 HeartFIT (Shed Rec Rm)
7 10:30 Social Meeting <i>Community hall</i> 10:15 for 10:30 \$8 for lunch	8 8:30 Leatherwork 8:00 Guitar lessons (2015/18/19/20) 8:00 Own woodwork 8:30 Guitar (2021-22) 10:00 Jam session 12:30 Woodcarving 12:30 Guitar (2024) 1:00 HeartFIT	9 8:00 Intermediate woodwork 8:30 Laser 9:00 Welfare 9:00 Writers 9:30 Emerging technologies (Vcarve & CNC router) 12:00 Woodturning 1:00 Management meeting	10 8:00 Woodturning learners 8:00 Woodworking Introduction 9:00 Cartooning 10:30 Cooking 12:45 Carpet Bowls	11 8:00 Small engines 8:30 Laser 9:00 Art/painting 12:00 Ukulele Jam 1:00 Welding 1:00 HeartFIT (Shed Rec Rm)
14 8.00 Induction 8:00 Woodturning 8:00 Own woodwork 8:30 Laser 9:00 Metal scrolling 9:00 Cards 9:00 Chess 10:30 Sausage sizzle guest speaker, \$5 12:00 Toy-making	15 8:30 Leatherwork 8:00 Guitar lessons (2015/18/19/20) 8:00 Own woodwork 8:30 Guitar (2021-22) 10:00 Jam session 12:30 Woodcarving 12:30 Guitar (2024) 1:00 HeartFIT	16 8:00 Intermediate woodwork 8:30 Laser 9:00 Writers 9:30 Emerging technologies (Vcarve & CNC router) 10:00 Travel group (Broadwater Pk) 12:00 Woodturning	17 8:00 Woodturning learners 8:00 Woodworking Introduction 9:00 Cartooning 10:00 Native Bees 12:45 Carpet Bowls 12:30 Photography	18 Easter (Good Friday) Shed closed
21 Easter Monday Shed closed	22 8:30 Leatherwork 8:00 Guitar lessons (2015/18/19/20) 8:00 Own woodwork 8:30 Guitar (2021-22) 10:00 Jam session 12:30 Woodcarving 12:30 Guitar (2024) 1:00 HeartFIT 1:00 B&G meeting	23 8:00 Intermediate woodwork 8:30 Laser 9:00 Writers 9:30 Emerging technologies (Vcarve & CNC router) 10:30 Cooking 12:00 Woodturning 1:00 WOC meeting	24 8:00 Woodturning learners 8:00 Woodworking Introduction 9:00 Cartooning 10:30 Cooking 12:45 Carpet Bowls 1:00 Fishing	25 ANZAC day Shed closed
28 8:00 Woodturning 8:00 Own woodwork 8:30 Laser 9:00 Metal scrolling 9:00 Cards 9:00 Chess 2:00 Toy-making 2:30 Emerging Tech	29 8:30 Leatherwork 8:00 Guitar lessons (2015/18/19/20) 8:00 Own woodwork 8:30 Guitar (2021-22) 10:00 Jam session 12:30 Woodcarving 12:30 Guitar (2024) 1:00 HeartFIT	30 8:00 Intermediate woodwork 8:30 Laser 9:00 Writers 9:30 Emerging technologies (Vcarve & CNC router) 12:00 Woodturning	1 May 8:00 Woodturning learners 8:00 Woodworking Introduction 9:00 Cartooning 12:45 Carpet Bowls	2 8:00 Small engines 8:30 Laser 9:00 Art/painting 12:00 Ukulele Jam 1:00 Welding 1:00 HeartFIT (Shed Rec Rm)

Woodworking Introduction 8.00 am to 12.00 pm on Thursdays. The wood-shop area is **shared only** with the **wood-turning** group. No other wood-shop activity currently.