

SHED TALK

THE NEWSLETTER OF
MT GRAVATT MEN'S SHED

VOLUME 17 JUNE 2026 NO.6



IN THIS ISSUE

President's Ponderings	2
Thanksgiving Service	3
Letters to Editor	4
Facebook Page	6
Caravan Cubby Project	7
Around the Shed	8
Art/Painting	10
Music	11
Wellbeing Wrap Up	12
Travel to Macleay Island	13
Meeting Tony Popovic	14
Chess	16
Photography	17
Lindeberg Cartoon Corner	18
Social Meeting Minutes	19
Humour	20
July Calendar	22

Annual Service of Thanksgiving at St Bartholomew's Anglican Church

The Thanksgiving Church Service which was held at St Bartholomew's Anglican Church, was deemed a great success by the large number of men and women who attended. The Shed Song was heartily sung by the congregation. The hymns were played by the Shed Band with the Church singers led by singer Don Godfrey.

The service was presided over by the Reverend Donna Petersen and the Sermon was presented by our Patron, The Right Reverend Doctor Doug Stevens.

A large number of articles of the work completed by our members was displayed at the rear of the church. Morning Tea was provided by members of St Bart's and enjoyed by all.

Vision

Provide Mateship and Support for Men

PRINTED COURTESY OF COUNCILLOR KRISTA ADAMS
& THE HOLLAND PARK WARD OFFICE

About us

Patrons

Body *Dr Brian Kable*

Mind *Prof Grant Devilly*

Spirit *Rt Rev Doug Stevens*

Management Committee

President *Peter Tyley*

Vice President *Lionel Armitstead*

Secretary *Mark Gillow*

Treasurer *Kingsley Manickam*

MC Members *Lionel Armitstead,*

Bruce Conmee, Wayne Hansen,

Mark Hastings, Bart McKnight,

Kevin Schneidewin, Andris Svilans

Area Co-Ordinators

Building & Grounds *Stephen Ord*

Workshop Projects *Fred Darvill*

Community

Projects *Bart McKnight*

Office *Jim Wiseman*

Recreation Room *Colin Smith*

Workshop *Lloyd Akeroyd*

Welfare *Ron Fair*

Other

Music Coordinator *Terry Thomson*

IT Coordinator *Bruce Conmee*

Deputy IT Coordinator

Assistant Treasurer *John Bettenay*

Assistant Welfare *Gerry Heneghan*

Woodworking Facilitator *Lloyd Akeroyd*

Wood Machinery *Lloyd Akeroyd*

Immediate Past President *John Wicks*

Test & Tag *Brad Gibson, Nev O'Brien*

Editorial Team

Editor *Wayne Hansen*

Proof Readers *Reuben Egan, Neil McPhail*

Editorial Assistant *Kevin Lindeberg,*

Kim Tvede

Email newsletter@mtgravattmensshed.org.au

Mail

Secretary

Post Box 239

Mansfield Qld 4122

Phone Shed Office (07) 3343 2216

www.mtgravattmensshed.org

Email: secretary@mtgravattmensshed.org.au



Sponsors Bill Hooper and daughter Louise presenting Peter with a donation of \$2000

Welcome, Shedders!

I must express my disappointment with our May meeting, which had only about 50 participants. We had an excellent speaker, and I'm concerned many of you missed valuable insights from both the speaker and our coordinators. These meetings are a fantastic opportunity to learn about what's happening at the shed and to hear from our guest speakers.

On a brighter note, I've noticed that the men assembling the new cubby house are nearing completion. It looks like we'll soon be selling raffle tickets, so we'll be on the lookout for ticket sellers on Sundays. Bryan, Ross, and Sam are doing an outstanding job, and this project is progressing more quickly than I anticipated. A big thank you to Barry Smith for his support on this initiative!

Acknowledgments

I would also like to thank David Stubbs for his article in the newsletter about the *parkrun*. I hope everyone finds your piece insightful, Dave, and that it resonates with the right audience—perhaps even benefiting someone in need.

Additionally, I want to express my gratitude to Ray Pyzak for his contribution to the newsletter. I fully support Ray's suggestion to create a small booklet for our inductees, which I believe will greatly assist our new members.

Shed Extension Updates

Regarding the new shed building, I've tried to keep a low profile with the new shed subcommittee. Unfortunately, we haven't been receiving the feedback you desire. Therefore, we've decided to be more transparent, and you will be the first to learn about our plans for the new shed and its contents. Please bear with us as we navigate the early stages of this project.

Upcoming Events

Shedders, the Mt Gravatt Show is fast approaching, and they are in need of volunteers. There won't be any heavy lifting involved—just helping at the gates. Lunch will be provided, and you'll have the chance to explore the show.

Lastly, mark your calendars for the members and partners lunch, scheduled for November 27, 2026. I'll provide more details later in the year.

Thank you, and stay safe!

Peter Tyley
0458 553 330
peter.tyley@bigpond.com

Thanksgiving Service at St Bart's



The Shed Tones



COVAL



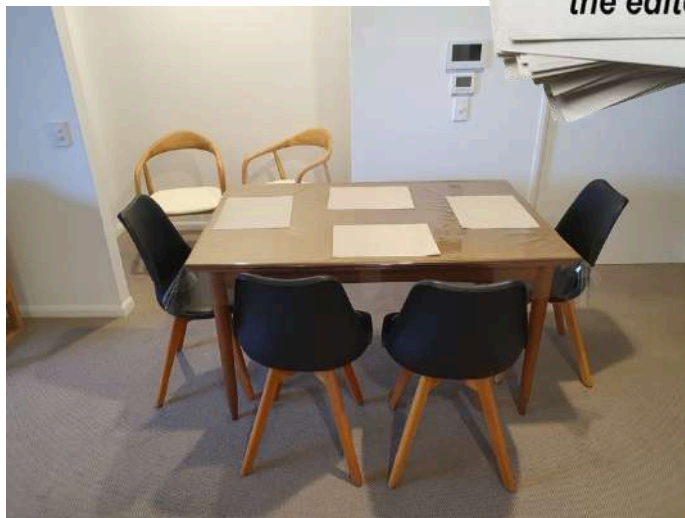
A portion of the MGMS display



Church singers led by singer Don Godfrey.



Letters to the editor



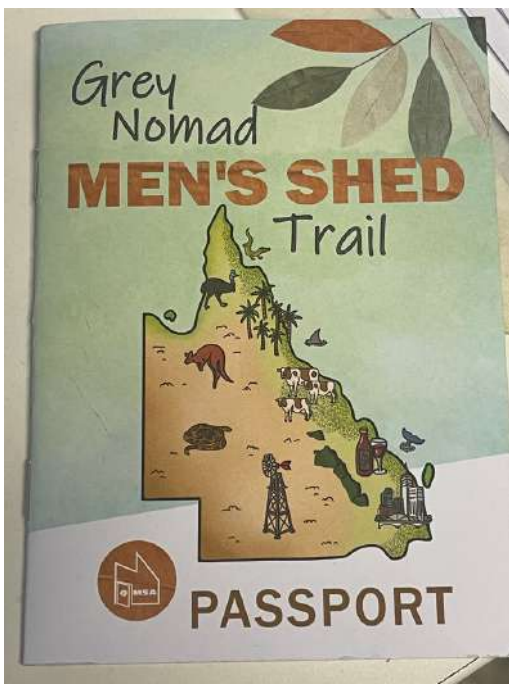
The Members of the Ladies' Shed Logan Village thank the Members of Mt Gravatt Men's Shed. We truly appreciate the scroll saw and will put it to great use. Thank you.

For Sale

Dining Table
Teak Laminate 4 ft 6 inch extends to 7 ft 4 inches.
Four dining chairs are included.
\$100 or nearest offer.

Jim Wiseman 0407 148 358

Mah-jong



Hi guys,
I've designed some stamps for the Grey Nomad Trail. Greg Self has used the laser engraver to produce the stamp. They will be about the size of a 50-cent piece.
Lawrie Bigham, Executive of QMSA, will be taking the stamps to Muttaborra for the Central Queensland Presidents' Forum on 16th June. The stamps will be given to the respective shed presidents.

Ed

Hi Editor,

The shed has received a wonderful gift: a game of Mah-jong! Does anyone know the rules and would be willing to teach other members how to play?

Bart McKnight



St. Barts
Anglican
Church
Mt Gravatt

We gather for worship Every
Sunday at 7.00am & 9.00 am

ROTARY CLUB OF MOUNT GRAVATT Inc.

PROUDLY SUPPORTS
THE MOUNT GRAVATT MEN'S SHED Inc.
Rotary Club of Mt Gravatt is a platinum sponsor of the Shed.

Striving to be a Christ
Centred Family Community

HERTFORD STREET BAPTIST CHURCH
Cor of Hertford & Dupre Sts,
Upper Mount Gravatt. 3343 6405
Service Time 9:00am
MGMS Bronze Sponsor

Wanted



Hello and good morning, Wayne. Could you ask if there are any of these bits spare? One of our Barcaldine guys does a lot of toys for the markets.

David Kerrigan
President Barcaldine Men's Shed.



Hey Wayne,
Today I visited the Cervantes Mens Shed. They have 60 members (men and women) and a beautiful shed. Their members collect old rope from the crabbing industry and weave them into thump mats to sell. I was shown around by Murray, the President (he's a gifted artist who works in metal and glass).

Back soon
Mark Gillow, Secretary



Lost & Found



Celebrating my upcoming 80th birthday, my eldest son took me to the Gabba on 14 May 2026 to watch our beloved Geelong Cats take on the Brisbane Lions.

As a supporter of over 50 years - a loyalty my son proudly inherits - the chilly, rainy evening was made perfect when the Cats convincingly flogged the Lions. We had the best seats in the house. They were high up in the stands with a marvellous view of the packed, sell-out crowd. The only downside to our vantage point was the constant "Gabba yo-yo" of standing up and down without a grumble every time a thirsty patron in our aisle needed to leave.

After the siren, I carefully negotiated the steep concrete decline "Mt Everest" steps with my life in danger by any misstep to ground level, only to pat my pockets and freeze. My wallet was gone. Panic set in. My son galloped back up the stadium steps but returned empty-handed. Resigned to the loss, I went home, broke the news to my wife, and locked down our accounts.

I went to bed feeling foolish, completely exposed, and facing the nightmare of replacing my driver's licence, pension card, and bank cards.

The next morning, I phoned the Gabba management with low expectations. To my absolute disbelief, the voice on the line said, "We've got it. Someone handed it in, completely intact. Come and get it!"

I collected it immediately, overwhelmed with gratitude but unable to thank the unidentified honest patron who handed it in.

The double lesson? Always secure your wallet and never lose faith in humanity. There are still wonderful, honest people amongst us.

Kevin Lindeberg No. 149

EDITOR'S NOTE: There must be similar stories to this. Let me know.

COVER

MGMS Facebook Page



Share a thought...



Mt Gravatt Sheddners

1 follower · 0 following
 Provide Mateship and Support for Men
 Local service

Professional dashboard

Edit

Advertise

Cover

Introducing Mt Gravatt Sheddners

I have set up a Facebook page called Mt Gravatt Sheddners, which is a public space welcoming all visitors. This platform serves as an ideal venue for connecting with fellow sheds and shedders. Please don't hesitate to share your photos, as many of our members are exploring both near and far across the globe.

Wayne Hansen



WANTED

Support the Mt. Gravatt Men's Shed Stall

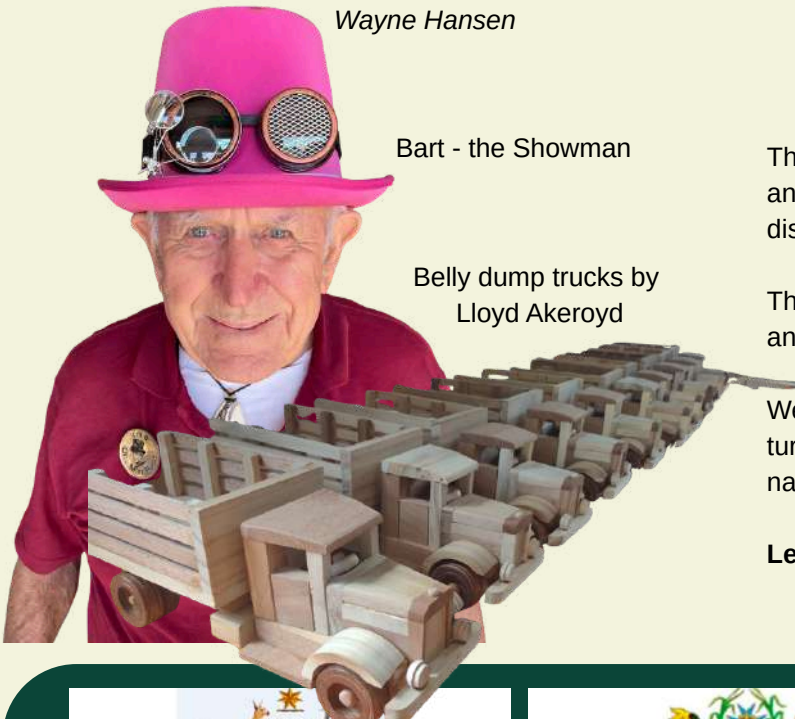
The Mt. Gravatt Men's Shed stall urgently requires items to sell and showcase our organisation. Last year's efforts were very disappointing across various activities.

This is a great opportunity to promote our shed to the community and help generate funds for our grants.

We welcome wares such as leatherwork, wooden toys, wood turning, metal scrolling, wood carving, and artworks, just to name a few, for display and sales.

Let's make our SHED proud!

Greg Self - Emerging Technologies Leader



Bart - the Showman

Belly dump trucks by Lloyd Akeroyd



Caravan Cubby Project

Bryan Cleary



Ross Howard & Sam Hornibrook



Bryan, Ian & Ross

Greetings, Fellow Shedders,

I'm pleased to share the latest news regarding our caravan cubby project.

Progress is moving along smoothly. The sides have been beautifully painted and stained in a retro surfer-caravan style, and linoleum has been installed inside. Currently, Steve and Skinny are focused on fitting the internal furniture, utilising exquisite American walnut timber generously donated by Riviera Yachts through the Labrador Men's Shed.

To date, our primary expenses have been for paint and glue, while most of the other necessary materials were fortunately already available at the shed. In the coming weeks, we will complete the interior, attach the pre-assembled sides, and then secure the roof.

Once the caravan is fully assembled, we will begin selling raffle tickets.



Bryan, Ross, Fred & Sam

We hope that everyone in the shed will purchase at least one book of tickets. This effort helps lower membership costs, and we're confident everyone will support it. In the true spirit of the shed, we also need volunteers to assist with ticket sales to the public at the Mt Gravatt Show and local Sunday markets.

It's always a great time, and your participation significantly supports the shed.

If you're available to help with selling, please reach out to Bart McKnight.



Bart presenting Julia with thank you flowers

It was great that we received an answer to our call for a member's partner with sewing experience. WELL...we received an offer from a member's wife, with experience far beyond our request. Julia Whinnett has upholstered the Caravan-Cubby seating and made the curtains.

COVER

Around the Shed



New members for June in no particular order: Brian McDonnell, Sonny Pizzica, Tim Collins, David Nayab, Jonno Klupp, David Giardina, Rowan Singh

Cover



Terry Macaulay painted the solitary native bee hotels. More work still to be done.



Colin Calvert - native communal bee boxes



Graeme Smith & Ken Pointon
Office workers



Ross to the rescue to help put the new office chair together for Dave



Ian Symes - leather belt





Photographers Richard, Ron, Mark, Neil & Baska visiting the Photography Exhibition at the Power House



Small Engines Group



Ross Dallas, Bob Nunn, Brian Wheeler, Rod Larkin



May Sausage Sizzle guest speaker, Andris Svilans & Lionel Armitstead



Lloyd Akeroyd & Ken Robson



The quiet achiever Bruce Boyce

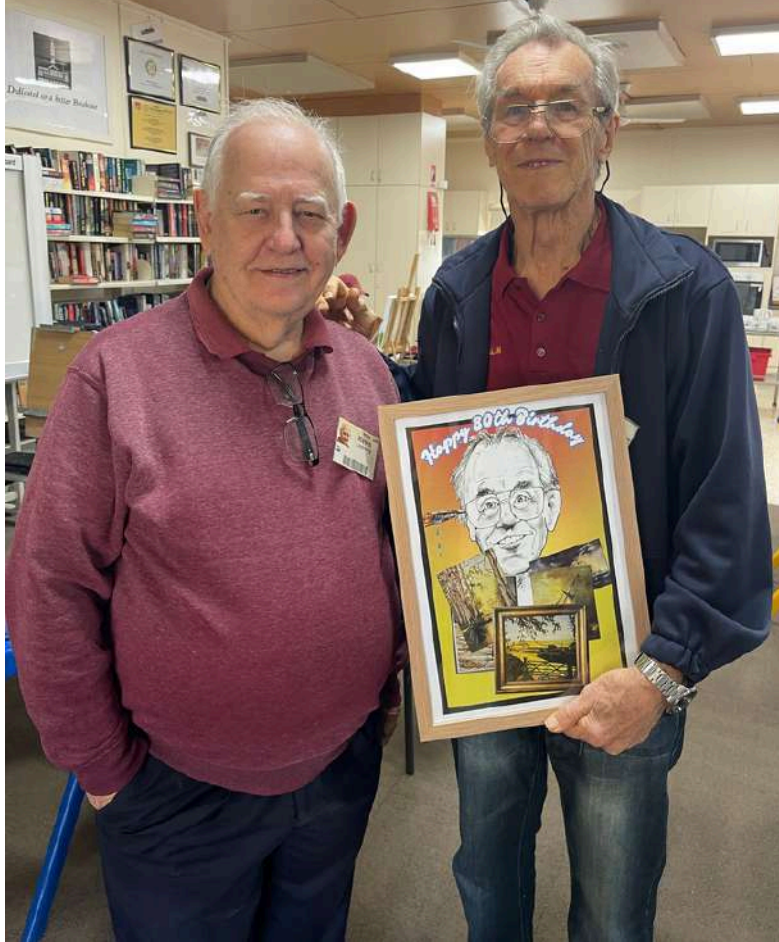


Tuesday Music Group

Cover

Art / Painting

Happy 80th Birthday



Caricature of Alan Carter by Kevin Lindeberg
Kevin and Alan

The flower paintings both won first prize at
the Crestmead Artists' June competition



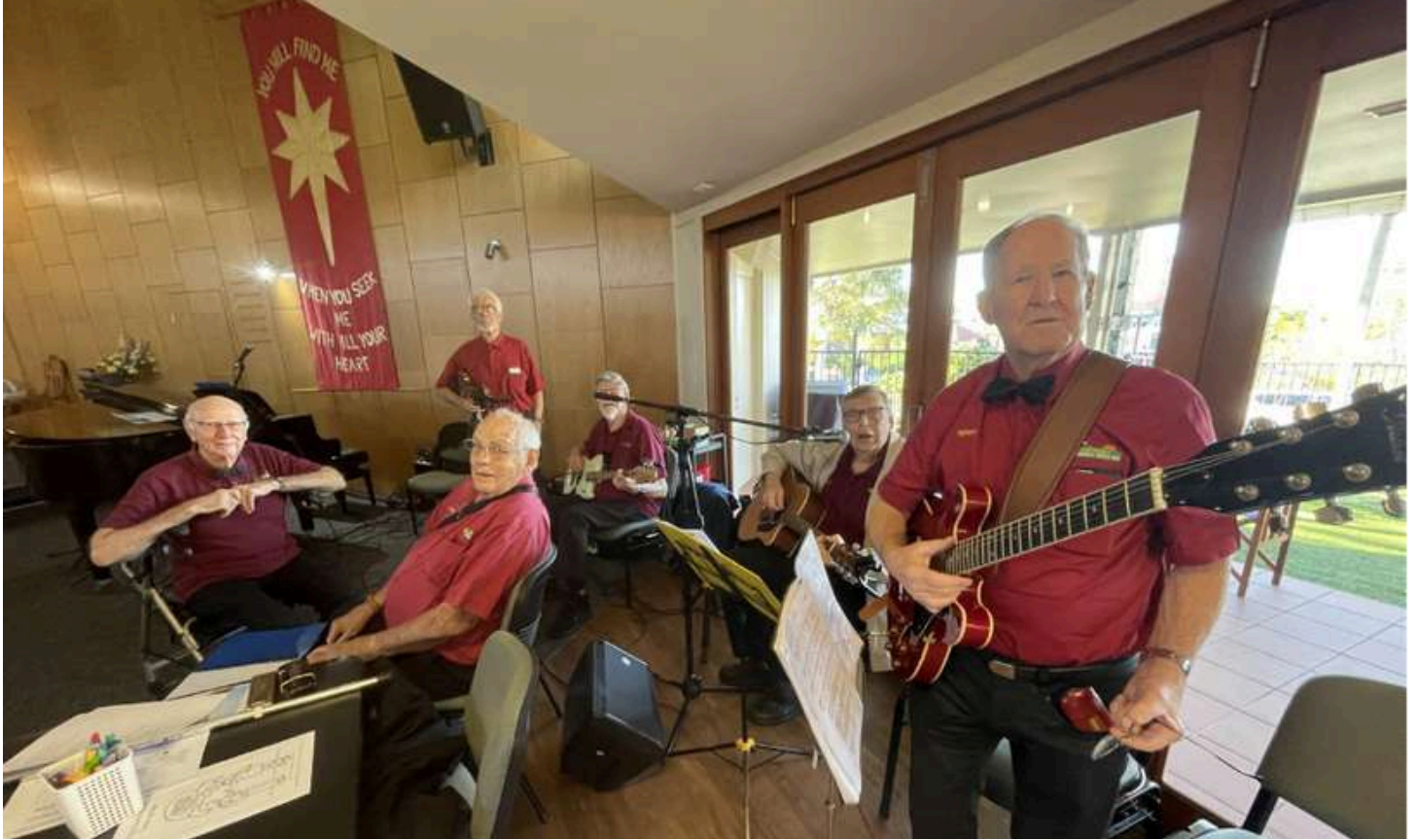
Nasturians by John Raines



A Rose by Wayne Hansen



The Art / Painting Group



A Memorable Morning with the Music Group

The photo above captures a talented music group just before the Shed Annual Church service at St. Bartholomew's on Mountain Street, Mt. Gravatt, on the morning of May 31st at 9:00 a.m. From left to right, we have Basil Wood on the black grand piano, Laurie O'Brien, Kornel Banvolgyi with his amplified violin, Dave Williamson on electric bass guitar, Jack Files on acoustic guitar, and Terry Thomson with his cherry red electric guitar.

The group looked splendid and exceptionally classy, especially with "the guys in bow ties." They donned their shed shirts, black trousers, and polished black shoes, representing the shed beautifully. Despite being positioned further apart than ideal, they performed with great enthusiasm. The songs played before the service included "Just a Closer Walk With Thee" and "Because He Lives." During the communion, they played "The Shed Song," "Amazing Grace," and "Holy, Holy, Holy."

The musicians' instruments and microphones were connected through the church's PA and sound system, enabling the sound engineer to adjust the volume and tones perfectly.

After the performance, we enjoyed a well-deserved cup of tea, a chat, and morning tea on the paved area outside the church. It was heartening to see a large turnout of "shedders" for this significant event in our shed calendar.

The inaugural President, Brian Wheeler, visited the group the following Tuesday morning in the recreation room to extend his "congratulations on a job well done," which was warmly received.

"How I wish, how I wish you were here." — G. W.

From Terry Thomson





Wellbeing WRAP UP



Laughter is Great Medicine

Of the dozens of character strengths a Shedder might possess, humour has been the number one signature strength for my entire life.

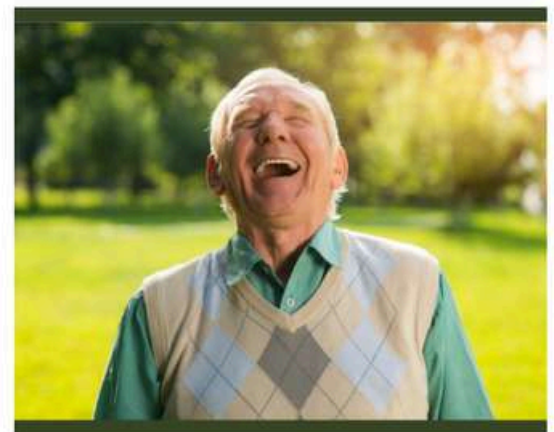
I have always enjoyed laughing with others, as well as good-natured teasing. Bringing a smile to another has been important for me. When I worked professionally, I took my various roles seriously, yet seeing the lighter side of situations and making jokes sensitively can be helpful, especially in the trying times.

Laughter draws people together and triggers healthy physical and emotional changes. It strengthens the immune system, elevates mood, diminishes pain, increases positivity, and protects from the damaging effects of anxiety and stress.

Laughter enhances the intake of oxygen-rich air, stimulates the heart, lungs and muscles, and increases the feel-good neurotransmitters that are released in the brain.

Enjoy your Shed time, watch comedies, have fun with friends, tell jokes, look for the lighter side of life, and remember that laughter really is the best medicine!

Article by Dr John Barletta, Ph.D.
(Maleny Men's Shed)
Health and Wellbeing Specialist
Queensland Men's Shed Association
johnb@qmsa.org.au
Published 2025



Travel Group - Macleay Island

Neville O'Brien



Thursday, 28th May was the best day for new adventures with thirty-six Shed Travel Group Members.

Join us for an exciting journey! We'll meet at the Shed to coordinate our drive to the Redland Bay Ferry terminal, as parking may be limited. Alternatively, you can take a bus to the terminal bus exchange.

Everyone gathered around 10 am for the 10:30 Island Ferry boarding, using the standard 'Go Card' for the 50-cent fare. The ferry departed promptly, and after a few minutes, a staff member called for anyone without a Go Card to come forward and pay the fare, either by card or cash. This efficient process proved helpful for several passengers.

We anticipated an open ferry similar to the old BCC river ferries, so we dressed accordingly—what a miscalculation, given that the weather was lovely! The ferry turned out to be a sealed tube with an open area only at the stern. While the seating was basic, lacking in space between rows and padding for comfort, it served its purpose as we navigated through the small waves. The ferry's powerful engines propelled us smoothly across the Moreton Bay waters.

We made stops at the jetties of Macleay Island, Lamb Island, and several smaller locations to pick up and drop off passengers. After approximately 30 minutes, we arrived at Russell Island. Upon disembarking, we walked 135 metres to land, where we either hopped into an "Island Pickup" vehicle or strolled up a slight incline to several coffee cafes.

As the morning ticked closer to noon, we missed the 11:35 ferry back to Macleay Island, requiring us to catch the 12:35 ferry instead. The ferry crew informed us not to use our Go Cards since we were still within the one-zone available time limit. We utilised the courtesy buses from the Macleay Island Bowls Club to take us to the club for lunch, as it was about 5 kilometres away—too far to walk.

At the Bowls Club, following the instructions on their website, I completed a membership form and submitted it along with the \$6 membership fee. According to the website, I was informed that upon submitting the form, I could enjoy member privileges right away. I was told that a staff member would soon bring over a card for my use today, which left me wondering if they had forgotten what I looked like, as the card never arrived. I was wearing the Shed's red coat, after all.

We decided to order from the main menu. My wife chose the Lamb Shank and finished it with a smile (as did Wendy G...). I opted for the Parma, which was quite substantial. I have always wondered why the Parma or steak is placed on top of the chips instead of the salad!

The views from the main restaurant floor were soothing, overlooking the bay waters just below the windows. There was also an outdoor veranda with a view of the bowling greens.

Time flew by, and soon we were back on the buses heading to the ferry. On our bus, someone asked the driver to take us back to the harbour. Upon arrival, another ferry docked, and several members of our group nearly boarded it by mistake.

Eventually, we boarded the correct ferry for our return trip to the mainland. Overall, our time was shorter than we would have liked, but it was an enlightening experience for those from Brisbane who had never ventured beyond our little suburbs. Thankfully, I haven't heard of anyone being left behind on any island.

This was another great Travel Group activity organised by the one and only Mr Kevin Sch...
Thank you, Kevin!



Meeting Tony Popovic

David Stubbs



Tony Popovic is being presented with a special award by the school principal in appreciation of the motivational speech delivered to the students. David Stubbs is on the left.

The recent success of the Socceroos under the leadership of coach, Tony Popovic, reminded me of the time when I had the opportunity to work with Tony Popovic while I was employed as an educational consultant in Qatar in 2006 and 2007.

In the early 2000s, Qatar, a tiny emirate (about five times the size of Canberra) in the Persian Gulf, was undergoing a massive transformation from being a traditional desert lifestyle into an economic powerhouse. The vision of the emirate's ruler, HH Sheik Hamad bin Khalifa Al Thani was that Qatar could become a major world power by exploiting the country's vast oil and gas reserves.

Supporting HH Sheik Hamad was his consort, HH Sheika Mozah Bint Nasser Al-Missned, an outstanding woman. Amongst dozens of accolades, HH Sheika Mozah was included in Forbes list of the 100 Most Powerful Women in the world in both 2007 and 2010. The Sheika's top priority was to reform the country's education system in order to ensure that all children in the country received the best possible education.

I was appointed to Hamad bin Abdullah bin Jassim Independent Preparatory School for Boys, part of a five-member team working for an American company, Mosaica Education Inc. (MEI). Our role was to model best practice in the classroom and to encourage all teachers to embrace higher standards.

One day, I had a brainwave!!!! I had just read in a local newspaper, *The Stadium*, that Tony Popovic who had just been playing in the FIFA World Cup in Germany was coming to Qatar to play for a local club. On a whim, I rang up the editor and boldly asked him to give me Tony Popovic's home phone number. To my complete surprise he gave me Tony's mobile phone number. Feeling extra bold, I rang up Tony Popovic, and after a bit of explanation, I asked Tony to visit the school to speak to the students. His response was, "I would love to do that!" Unbelievable! It was that easy!

But then the hard work started. In preparation for Tony's visit, I ensured that all students read as much as they could about Tony Popovic and practiced asking interview questions in English.

When the big day arrived, Tony Popovic was BRILLIANT. A great communicator. The students were in awe. They were sharing the same space, the school's auditorium, with a FIFA World Cup star. One student boldly asked Tony, "Did you come to Qatar for the football or for the money?"

Tony laughed and replied honestly, explaining that when he first started playing football, he didn't care about money, "I just wanted to play football." But, now in the twilight of his career, he has to care for his family and so, "Yes" he had come to Qatar for the money.

My boss, the Team Leader interjected and posed two questions, namely, "Who influenced you as a footballer, growing up?", followed by "As someone who has reached the pinnacle of the game, namely, playing in the World Cup, what advice do you have for these boys?"

To answer the first question, Tony declared that his father, Bratislav Popovic, was a big influence, citing an example of how tough a critic his father was. One day, Tony was playing a club match where he scored three goals and was selected in the Australian Under 19 side.

After the match, Tony's Dad asked him "Tony, how did you think that you went in today's game?". Tony had responded, "Great, Dad, I scored three goals and got selected in the Australian under-19 side." To his chagrin, Tony's Dad had described his performance as "Kind of OK."

After telling this anecdote, Tony's advice to the students was: "If you strive for excellence, you might end up with something which isn't too bad."

Reflecting about Qatar, by any measure, in 2026 the former Emir, HH Sheik Hamad has succeeded in his goal to transform the country. For example, the state of Qatar hosted the FIFA World Cup in 2022 and over the years has hosted many international sporting and cultural events. The national airline of Qatar flies to over 170 destinations. Qatar is a key player in the peace negotiations currently happening in the Middle East.



Chess Group

Alan Highman



Hi Shedders,
Not much to report this month with the holiday and the monthly meeting. We would love to see some more players come along and join us for a friendly yet competitive game.

Here is an opening trap for you:
Double King Pawn Opening

1. P-e4 P-e5
2. P-d4 P-d6
3. Pxe5 Pxe5
4. Qxd8+ Kxd8
5. B-c4 K-e8
6. N-f3 N-d7
7. N-c3 N-e7
8. N-g5 P-f6
9. B-f7+ K-d8
10. N-e6#

This month's puzzle is white to move and mate in 3: (Solution Page 18)



This morning, I coughed up a pawn, a bishop, and a rook. I must have a chess infection.

It was a rough knight.

Give away - Toy Garage

Hi Wayne,

These are the photos of the toy garage that I made in 1981 for our three boys. Its base is 980 X 840mm. Height is 80mm. It has 2 petrol pumps, a hoist and a car wash.

None of my family wants it, so I want it to go to a home that can use it. If anyone is interested, they can contact me on 3162 8672.

Many thanks
Brian Wandel.



Photography Group



Fort Lytton
7th June 2026

[Link to Website](#)



Photography Group



Baska Desha



Keith Cordwell



Stephen Spinks



Lionel Armitstead



Keith Cordwell



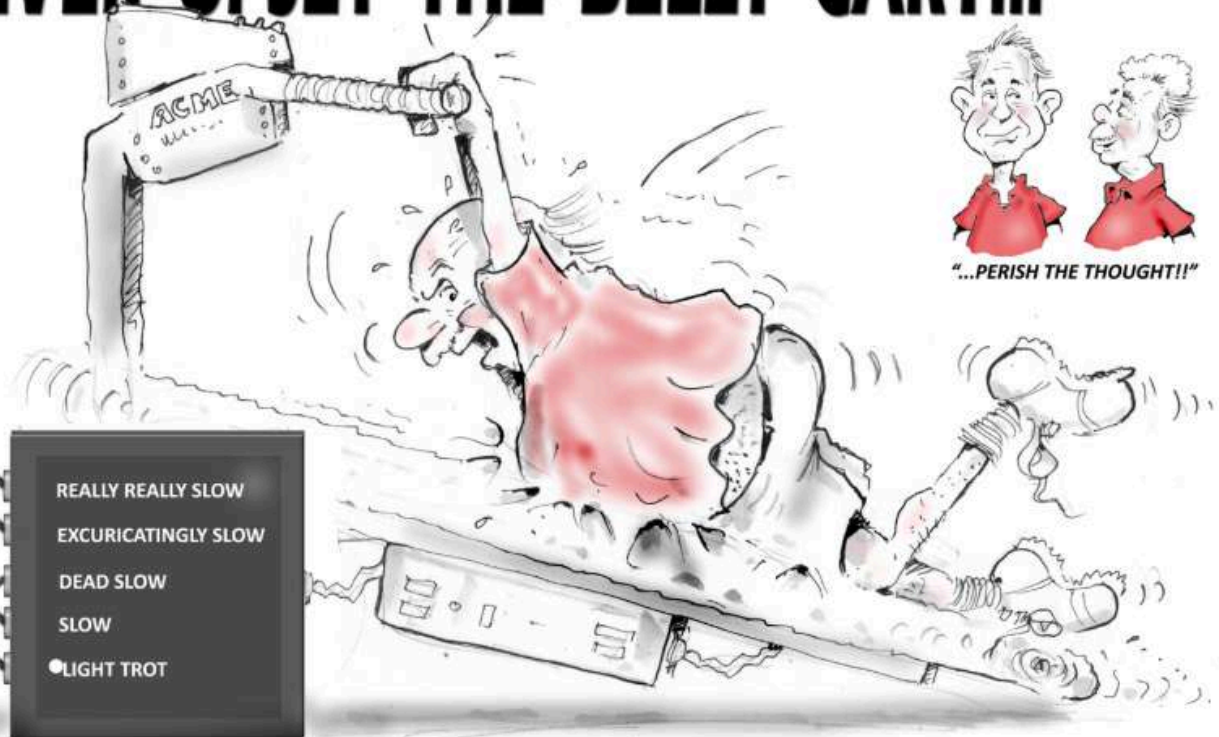
Ron Green



Ron Green



NEVER UPSET THE BELLY CART...



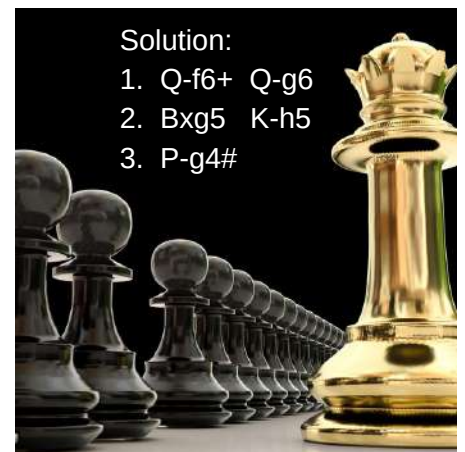
"...OKAY, OKAY...WHO WAS THE SMART CLOWN WHO PUT THE SPEED UP TO DEAD SLOW?"

Trusted Tradies:

Plumber	Braith Garner	0405 609 879
Electrician	Cade Howard CMH Electrical	0402 157 565
Caravan Appliance & Air conditioning Repairs Gas Cerification	Lucas	0418 804 977 E: info@caacr.com.au
Electrician	Style Electrical	(07) 3343 8017 E: admin@styleelectrical.ocm.au
Handy Man	Do you know someone to fit the task?	
Mechanic		



Mount Gravatt
Unit 3/39 Secam Street
Mansfield QLD 4122
T 07 3343 9588
mountgravatt@signarama.com.au
signarama.com.au/mountgravatt



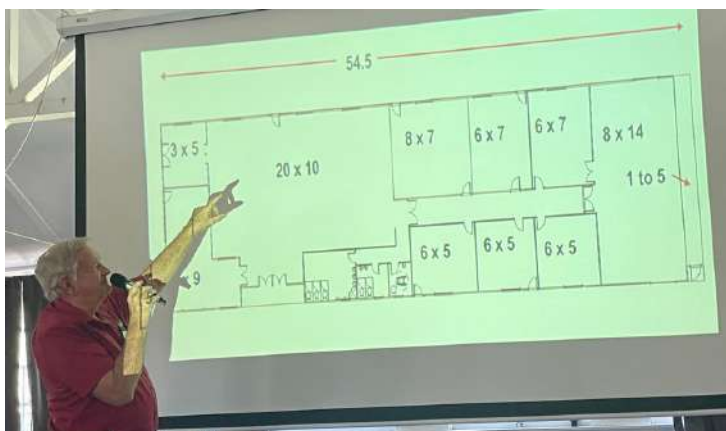
- Solution:
1. Q-f6+ Q-g6
 2. Bxg5 K-h5
 3. P-g4#

Social Meeting Minutes

1st June 2026



Seventy-five members attended the meeting



Dave Tate and the concept plan of the new building

Welfare: Gerry Heneghan

Nine new members this month. Visit to Paul Cusack at Tri Care.

Another three volunteers are needed. One member turned 92 this month. A list of the Welfare Volunteers is required for the office.

E: welfare@mtgravattmensshed.org.au

New Building: Dave Tate

The new drawings were explained. The apex of the building will be 5 metres high, providing a 15-degree pitch for easy tradie access. There will be no mezzanine. The Events Toilets will be separate from our new build and can be funded by grant money.

Workshop: Fred Darvil

Volunteers are required to sort bolts and nails. Many projects have been completed.

Building & Grounds: Tony G

The awning that caused the injury has been fixed by Barry White. We require a forklift to raise heavy items in storage especially in the new building.



Guest speaker Dr Dave Misso & Brian Wheeler

Travel: Kevin Scheidewin

Lots of day trips are organised. Christmas in July will be at St. Bernard's Hotel, Mt Tamborine. Southern Cross Club will host our dinner next Tuesday.

Office: Jim Wiseman

The new Point of Sale system will go live 1st July

Presentation by Dr Dave Misso Understanding and regulating internal states

- An internal state is the whole experience happening inside us at a particular moment.
 - 1. **Body** -tension, heaviness, heat, tight chest, tiredness
 - 2. **Feeling** -anger, worry, sadness, shame, fear, grief, loneliness
 - 3. **Thoughts** -the story I am telling myself about what is happening
 - 4. **Impulse** -withdraw, argue, fix, blame, shut down, reach out
 - We carry many different states
 - One example: depression as an internal state
 - Strong states can narrow the mind
 - States are relational
 - 5. When we feel low, ashamed or threatened, the mind can read ordinary moments as rejection, criticism or disrespect.
- Congratulations to Dr Dave for his excellent talk to our group. Many members were very impressed and interested to access Dr Dave Misso's full presentation. Click the link below.

[Link to Presentation](#)



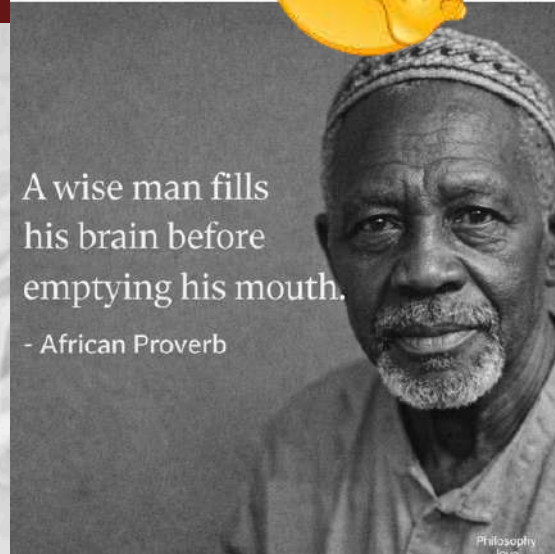
Cover

HUMOUR



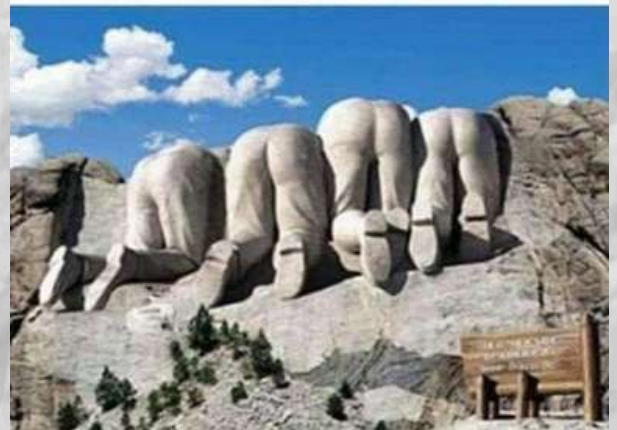
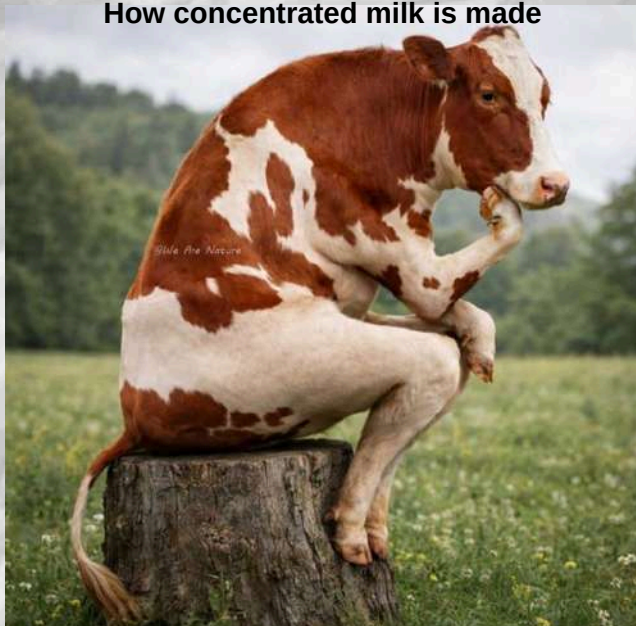
Beware of a new Amazon scam. My husband ordered me some expensive jewelry, but motorcycle parts came instead. Thankfully they fit his bike...

A wise man fills his brain before emptying his mouth.
- African Proverb



You know, there are some things that you just never think of like Mt. Rushmore from the Canadian side.

How concentrated milk is made



Two young boys walked into a pharmacy one day, picked out a box of Tampax and proceeded to the checkout counter. The man at the counter asked the older boy, "Son, how old are you?" "Eight," the boy replied. The man continued, "Do you know how these are used?" The boy replied, "Not exactly, but they aren't for me. They are for my brother, he's four. We saw on TV that if you use these you would be able to swim and ride a bike. He can't do either one."



Sad news - the inventor of autocorrect collapsed in the street yesterday. He was taken by ambience to the nearest horse piddle.



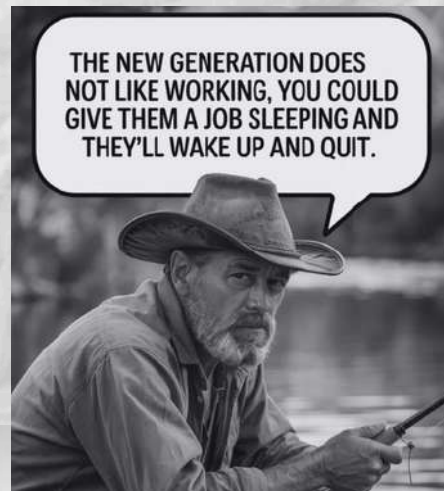
Boy aged 4: Dad, I've decided to get married.
Dad: Wonderful; do you have a girl in mind?!
Boy: Yes... grandma! She said she loves me, I love her, too....and she's the best cook & story teller in the whole world!!
Dad: That's nice, but we have a small problem there!!
Boy: What problem?!
Dad: She happens to be my mother. How can you marry my mother?!
Boy: Why not?! You married mine!!!!



For our anniversary, my wife hinted she wanted something shiny that could go from 0 to 150 in seconds. I bought her a bathroom scale. And that's when the fight began.



My wife just asked me to pass her the lip balm. I accidentally gave her the super glue by mistake. She's still not talking to me! 😊



July 2026

Saturday 4 NB# 2:45 for 3 pm: Arvo Entertainment Group bring a plate of food to share if interested.

"Woodworking Introduction" 8.00 am to 12.00 pm on Thursdays. The wood-shop area is **shared only** with the **wood-turning** group.at these times to limit noise during instruction.

Monday	Tuesday	Wednesday	Thursday	Friday
June 29 8:00 Woodturning 8:00 Own woodwork 8:30 Laser 9:00 Metal scrolling 9:00 Cards 9:00 Chess 12:00 Toy-making	30 8:00 Leatherwork 8:00 Welding training 8:00 Guitar lessons (2015/18/19/20) 8:00 Own woodwork 8:30 Guitar (21/22/24) 10:30 Jam session 12:30 Woodcarving 1:00 HeartFIT	1 8:00 Intermediate woodwork 8:00 Karaoke 8:30 Laser 9:00 Writers 9:30 Emerging technologies (Vcarve & CNC router) 12:00 Woodturning	2 8:00 Woodturning learners 8:00 Woodworking Introduction 9:00 Cartooning 12:45 Carpet Bowls	3 8:00 Small engines 8:30 Laser 9:00 Art/painting 12:00 Ukulele Jam 1:00 HeartFIT (Shed Rec Rm)
6 Social Meeting Community hall 10:15 for 10:30 start, \$8 for lunch	7 8:00 Leatherwork 8:00 Welding training 8:00 Guitar lessons (2015/18/19/20) 8:00 Own woodwork 8:30 Guitar (21/22/24) 10:30 Jam session 12:30 Woodcarving 1:00 HeartFIT	8 8:00 Intermediate woodwork 8:00 Karaoke 8:30 Laser 9:00 Writers 9:30 Emerging technologies (Vcarve & CNC router) 12:00 Woodturning 12:30 MC meeting	9 8:00 Woodturning learners 8:00 Woodworking Introduction 9:00 Cartooning 10:30 Cooking 12:45 Carpet Bowls	10 8:00 Small engines 8:30 Laser 9:00 Art/painting 12:00 Ukulele Jam 1:00 HeartFIT (Shed Rec Rm)
13 8.00 Induction 8:00 Woodturning 8:00 Own woodwork 8:30 Laser 9:00 Metal scrolling 9:00 Cards 9:00 Chess 10:30 Sausage sizzle guest speaker \$5 12:00 Toy-making	14 8:00 Leatherwork 8:00 Welding training 8:00 Guitar lessons (2015/18/19/20) 8:00 Own woodwork 8:30 Guitar (20/22/24) 10:30 Jam session 12:30 Woodcarving 1:00 HeartFIT	15 8:00 Intermediate woodwork 8:00 Karaoke 8:30 Laser 9:00 Writers 9:00 Welfare 9:30 Emerging technologies (Vcarve & CNC router) 10:00 Travel group (Broadwater Park) 12:00 Woodturning	16 8:00 Woodturning learners 8:00 Woodworking Introduction 9:00 Cartooning 12:30 Photography 12:45 Carpet Bowls	17 8:00 Small engines 8:30 Laser 9:00 Art/painting 12:00 Ukulele Jam 1:00 HeartFIT (Shed Rec Rm)
20 8:00 Woodturning 8:00 Own woodwork 8:30 Laser 9:00 Metal scrolling 9:00 Cards 9:00 Chess 12:00 Toy-making	21 8:00 Leatherwork 8:00 Welding training 8:00 Guitar lessons (2015/18/19/20) 8:00 Own woodwork 8:30 Guitar (21/22/24) 10:30 Jam session 12:30 Woodcarving 1:00 HeartFIT 1:00 B&G meeting	22 8:00 Intermediate woodwork 8:00 Karaoke 8:30 Laser 9:00 Writers 9:30 Emerging technologies (Vcarve & CNC router) 12:00 Woodturning 1:00 WOC meeting	23 8:00 Woodturning learners 8:00 Woodworking Introduction 9:00 Cartooning 10:00 Native Bees 10:30 Cooking 12:45 Carpet Bowls	24 8:00 Small engines 8:30 Laser 9:00 Art/painting 12:00 Ukulele Jam 1:00 HeartFIT (Shed Rec Rm)
27 8:00 Woodturning 8:00 Own woodwork 8:30 Laser 9:00 Metal scrolling 9:00 Cards 9:00 Chess 12:00 Toy-making	28 8:00 Leatherwork 8:00 Welding training 8:00 Guitar lessons (2015/18/19/20) 8:00 Own woodwork 8:30 Guitar (21/22/24) 10:30 Jam session 12:30 Woodcarving 1:00 HeartFIT	29 8:00 Intermediate woodwork 8:00 Karaoke 8:30 Laser 9:00 Writers 9:30 Emerging technologies (Vcarve & CNC router) 12:00 Woodturning	30 8:00 Woodturning learners 8:00 Woodworking Introduction 9:00 Cartooning 12:45 Carpet Bowls	31 8:00 Small engines 8:30 Laser 9:00 Art/painting 12:00 Ukulele Jam 1:00 HeartFIT (Shed Rec Rm)

Cover