

# SHED TALK

THE NEWSLETTER OF THE  
MT. GRAVATT MEN'S SHED

VOLUME 14 APRIL 2023 NO.4



MOUNT GRAVATT  
MEN'S SHED Inc.  
Men Making a Difference



Brian Wheeler offers A BIG THANKYOU to Cr. Krista Adams, Deputy Mayor and Councillor for Holland Park Ward, Brisbane City Council, for her continued support to OUR Shed. Congratulations also go to ALL members who took part in the week-long Celebration of the 10th Anniversary of the Official Opening of OUR Shed.

## Vision

*To provide a facility where men of all ages can feel comfortable and gather together to spend time socially, as well as in a practical manner, by participating in constructive endeavours that develop self esteem.*

PRINTED COURTESY OF COUNCILOR KRISTA ADAMS  
& THE HOLLAND PARK WARD OFFICE

## IN THIS ISSUE

<a href="#">President's Ponderings</a>	2
<a href="#">Anzac Day</a>	3
<a href="#">Letters to Editor</a>	4
<a href="#">Notes from the Editor</a>	5
<a href="#">Open Day</a>	6
<a href="#">Morning Tea &amp; Lunches</a>	8
<a href="#">Around the Shed</a>	9
<a href="#">Official Celebrations</a>	10
<a href="#">Tokens of Appreciation</a>	12
<a href="#">Lindeberg's Cartoon Corner</a>	15
<a href="#">Guitar Music Group</a>	16
<a href="#">Agassi Sheep &amp; Cheesy</a>	18
<a href="#">New Members/Raffle Results</a>	19
<a href="#">Singalong with Laurie</a>	20
<a href="#">Timing is Everything</a>	21
<a href="#">May Calendar</a>	22

# About us

## Patrons

**Body** Dr Brian Kable

**Mind** Professor Grant Devilly

**Spirit** Rt Rev Doug Stevens

## Management Committee

**President** Peter Tyley

**Secretary** Robert Fraser

**Assistant Secretary** Lionel Armitstead

**Minutes Secretary**

**Treasurer** Graeme Cumner

**MC Members** John Wicks, Terry Thomson,  
John Westwood

## Area Co-ordinators

**Building & Grounds** Dave Tate

**Workshop Projects** Fred Darvill

## Community

**Projects** Bart McKnight

**Office** Jim Wiseman & Paul O'Neill

**Recreation Room**

**Workshop** Don Tanner

**Welfare** Steve Fluerty

## Other

**Music Coordinator** Terry Thomson

**IT Coordinator** George Parkinson

**Deputy IT Coordinator** Ross Hall

**Assistant Treasurer** John Bettenay

**Assistant Welfare** Bruce Stafford

**Woodworking Facilitator** Lloyd Akeroyd

**Maintenance Subcommittee:** Dave Tate

**Wood Machinery** Don Tanner

**Immediate Past President** John Wicks

**Test & Tag** Brad Gibson, Nev O'Brien

## Editorial Team:

**Editor** Wayne Hansen

**Proof Readers** Neil McPhail, Reuben Egan

**Editorial Assistants** Kim Tvede, Terry Thomson

**Email** newsletter@mtgravattmensshed.org.au  
secretary@mtgravattmensshed.org.au

## Mail

Secretary

Post Box 239

Mansfield Qld 4122

**Phone Shed Office** (07) 3343 2216

www.mtgravattmensshed.org



Dear Members,

I wanted to take a moment to express my sincerest gratitude to each and every one of you for your hard work and dedication during our recent open week at the Mt Gravatt Men's Shed.

Thanks to your tireless efforts, we were able to showcase our fantastic facilities, the projects we have been working on, and the warm and welcoming community we have built here at the shed. We had a record number of visitors come through our doors, and know that your enthusiasm and passion for the work we do was evident to all who attended.

It is truly inspiring to see the way in which we all come together to support one another, to learn new skills and to make a positive impact on our community. Your commitment to the Men's Shed and to each other is a testament to the values that we hold dear and to the strength of our collective spirit.

So once again, I offer my deepest thanks to Brian Wheeler for his enormous contribution to our open week's success. Let us continue to build on this momentum and to make the Men's Shed a place where all are welcome, and where we can continue to learn, grow and support one another.

*Peter Tyley* 

0458 553 330

peter.tyley@bigpond.com





### 'ANZAC' stands for Australian and New Zealand Army Corps.

On the morning of 25 April 1915, the ANZACS set out to capture the Gallipoli peninsula in order to open the Dardanelles to the allied navies. These became known as Anzacs and the pride they took in that name continues to this day. The objective was to capture Constantinople (now Istanbul in Turkey), the capital of the Ottoman Empire, and an ally of Germany.

The ANZACS landed on Gallipoli and met fierce resistance from the Ottoman Turkish defenders. Their plan to knock Turkey out of the war quickly became a stalemate, and the campaign dragged on for eight months.

At the end of 1915, the Allied Forces were evacuated. Both sides suffered heavy casualties and endured great hardships. Over 8,000 Australian soldiers were killed. News of the landing on Gallipoli and the events that followed had a profound impact on Australians at home. The 25th of April soon became the day on which Australians remember the sacrifice of those who had died in the war.

The ANZACS were courageous and although the Gallipoli campaign failed in its military objectives, the Australian and New Zealand actions during the campaign left us all a powerful legacy.

With the coming of the Second World War, Anzac Day also served to commemorate the lives of Australians who died in that war. The meaning of Anzac Day today includes the remembrance of all Australians killed in military operations.

Anzac Day remembrance takes two forms. Commemorative services are held at dawn – the time of the original landing in Gallipoli – across the nation. Later in the day, ex-servicemen and women meet to take part in marches through the major cities and in many smaller centres. Commemorative ceremonies are more formal and are held at war memorials around the country.

Members from Australia's Federation Guard form a catafalque party around the Tomb of the Unknown Australian Soldier at the Australian War Memorial.

A typical Anzac Day ceremony may include the following features: an introduction, hymn, prayer, an address, laying of wreaths, a recitation, the Last Post, a period of silence, either the Rouse or the Reveille, and the national anthem. After the Memorial's ceremony, families often place red poppies beside the names of relatives on the Memorial's Roll of Honour, as they also do after Remembrance Day services.

Rosemary is also traditionally worn on Anzac Day, and sometimes on Remembrance Day. Rosemary has particular significance for Australians as it is found growing wild on the Gallipoli Peninsula. Since ancient times, this aromatic herb has been believed to have properties to improve memory.



Australian troops in Vietnam

During World War One, the friends and families of soldiers and community groups sent food to the fighting men. Due to the time delays in getting food items to the front lines, they had to send food that would remain edible, without refrigeration, for long periods of time that retained high nutritional value; the Anzac biscuit met this need.

Although there are variations, the basic ingredients are: rolled oats, sugar, plain flour, coconut, butter, golden syrup or treacle, bi-carbonate of soda, and boiling water. The biscuit was first known as the Soldiers' Biscuit. The current name, Anzac Biscuit, has as much to do with Australia's desire to recognise the Anzac tradition and the Anzac biscuit as part of the staple diet at Gallipoli.

The Anzac biscuit is one of the few commodities that are able to be legally marketed in Australia using the word 'ANZAC', which is protected by Federal Legislation.



Hunter Class FFG Royal Australian Navy



Congratulations Wayne on another first-class newsletter.

I have just spent some time reading every page and I must say I thoroughly enjoyed it. It was so interesting to look back on the story of the MGMS over the past years and much credit goes to the willing band of workers who have done so much - no doubt they have enjoyed it all. And really I guess that's the whole point of the Men's Shed - the coming together of men to enjoy each other's company in whatever endeavour they choose.

I loved Dave Tate's story, 'But the Paint was Free' and thanks to Dave for taking the time to entertain and amuse us.

It seems to me that the editor of your club's newsletter has a somewhat onerous and maybe thankless job, which comes around too frequently with each new month. I'm sure everyone does appreciate your efforts Wayne because, in all of our nation's Men's Sheds, the MGMS newsletter is number one.

Many thanks and long may the Mt Gravatt Men's Shed and its newsletter continue.

Kind regards - Sandra Hillery



#### SAD NEWS:

Members might recall an attractive woman in a black dress and red shoes serving champagne at the cartoon display at the previous 10th-anniversary celebrations in 2019 for the commencement of the MGMS organisation. That woman was Elizabeth Graham, a community health worker. Elizabeth died at Easter from three completely different cancers. She was 67 years old, Phil Vardy's partner.

MGMS

Many, many thanks for repairing my spinning wheel so beautifully.

Please thank Fred for plastic holders, Sarge and Ron for woodwork and Graeme for staining and final assembly of this spinning wheel.

Most appreciated.

Sue Smyth



#### FRIENDLY FARMER

There was a farmer who grew excellent-quality corn. Every year he won the award for the best-grown corn. A newspaper reporter interviewed him one year and learned something interesting about how he grew it. The reporter discovered that the farmer shared his seed corn with his neighbours. "How can you afford to share your best seed corn with your neighbours when they enter corn in competition with yours each year?" the reporter asked. "Why sir," said the farmer, "Didn't you know? The wind picks up pollen from the ripening corn and swirls it from field to field. If my neighbours grow inferior corn, cross-pollination will steadily degrade the quality of my corn. If I am to grow good corn, I must help my neighbours grow good corn." So is with our lives... Those who want to live meaningfully and well must help enrich the lives of others, for the value of a life is measured by the lives it touches. And those who choose to be happy must help others find happiness, for the welfare of each is bound up with the welfare of all...

Steve Fluerty



# Notes from the Editor

Editor email: [newsletter@mtgravattmensshed.org.au](mailto:newsletter@mtgravattmensshed.org.au)



Finally, I have set up the correct email address for the editor: [newsletter@mtgravattmensshed.org.au](mailto:newsletter@mtgravattmensshed.org.au). Please use this address for communications.

For a couple of years, I have attempted to obtain the contact details of Men's Sheds in the southeast to begin communications rather than operate in isolation. With the assistance of John Greatrex and Rob Collins from QMSA, they provided a link in their eNewsletter and Facebook page. Another source emailed me a list of sheds and contact details. Currently, the MGMS newsletter is being sent to 20 sheds in the South East. This is an opportunity to exchange ideas, strategies and any number of challenges that arise daily. (Recruitment, finance, WH&S etc.)

For the benefit of new readers, the newsletter has LINKS (hyperlinks). Providing you have internet access, click on any underlined heading and the link will open the desired page. Click the ARROW on the right of the page to return to the cover page.



IN THIS ISSUE	
<a href="#">President's Ponderings</a>	2
<a href="#">Anzac Day</a>	3
<a href="#">Letters to Editor</a>	4
<a href="#">Notes from the Editor</a>	5
<a href="#">Open Day</a>	6
<a href="#">Morning Tea &amp; Lunches</a>	8
<a href="#">Around the Shed</a>	9
<a href="#">Official Celebrations</a>	10
<a href="#">Guitar Music Group</a>	12
<a href="#">Lindeberg's Cartoon Corner</a>	16
<a href="#">Android Phone Tips</a>	16
<a href="#">Guitar / Music Group</a>	17

I have been involved in a couple of newsletters in the past and the greatest problem has been obtaining contributions from readers. Being the editor for the MGMS, I am often surprised that I have been provided with too much content and need to save articles for future editions. Some articles, I source from the internet, especially regarding health and other issues but the number of submissions from members and associates is very encouraging.

I had some banners printed through Officeworks to promote the Shed at internal and outside events. These replace the terrible hand-written chalkboards of the past. They will certainly present our shed in a positive light for the sausage sizzles at Bunnings and Musical Performances.

During recent months, I have had the privilege to work in the shadow of our Founding President, Brian Wheeler. Brian was the driving force behind our very successful Anniversary Celebrations. Over many months, he has worked tirelessly by organising and planning the various stages. I know it was a huge challenge and he lost many hours of sleep managing the smallest details. Without doubt, he could not have succeeded without the help and support of his wonderful wife, Ngari.

Wayne Hansen. Editor





# Open Day – 15th April 2023



The Welcoming Committee - Ian, Steve & Bart



Bruce Meyers - Woodturning Leader



The Workshop



Small Engines



Wood Carving



Leatherwork



Photographer John Wicks



Lloyd Akeroyd's Wooden Toys



Wood Carving







The Shed Tones



Painting Group



Fred Darvill demonstrating 3d Printing with members from the Carina Shed



Kim Tvede - Writers' Group Leader



Metal Scrolling



Laser Engraved and Cut



# Free Morning Tea & Lunch – Celebration Week



Ex-member Mick Theaker prepared to assist with morning tea.



President Peter Tyley with caterers Toni McDonald and Christine Marshall



Bryan Cleary



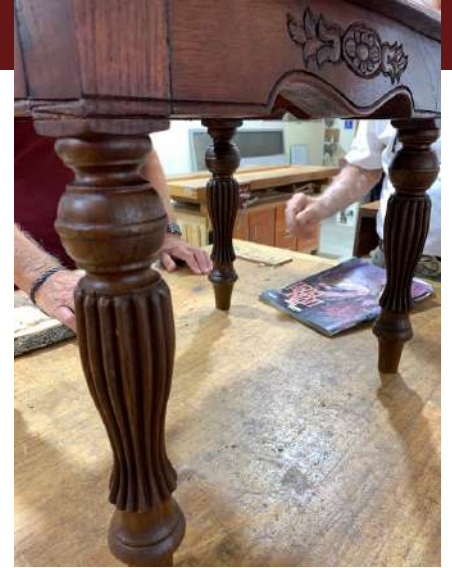
Bart McKnight with Ian Symes

**Lucky Door Prize every day - \$300 worth of groceries. Winners were**

Monday	Ross Walker	#732
Tuesday	Ross Dallas	#169
Wednesday	Fred Darvill	#586.
Thursday	Bryan Cleary	#727
Friday	Ian Symes	#530



# Around the SHED



The table above is made from bits and pieces. The legs and top were salvaged from Harvey's Antique Furniture Business. The legs could be 60 to 80 years old and needed a bit of work to bring them up to scratch. The top of the table was originally maple which was stained cedar to match the legs. The rails of the table were cut out at the shed and a wooden spokeshave was used to get the desired shape. The carving design was completed at home. The 4 rails were dowelled into the legs and the top screwed on from underneath the rails. The table was then shellacked and waxed.

*Bob Nunn*



Scroll Sawing



Morning Tea



Matthew's masterpiece



Wood Carvers



# Official Day – Wednesday 19th April



Front Row: Robert Fraser, Brian W, Krista, John Greatrex, President of QMSA & daughter  
Invited Guests: Bill Hooper - Bill Hooper Real Estate; Graeme Smith – Mt Gravatt Showground Trust; Greg Goebel - Mt Gravatt Show Society



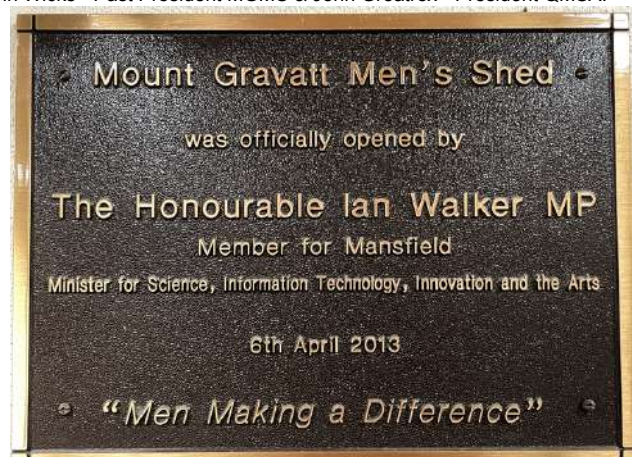
Krista presenting Bert Dean with his Plaque



Deputy Mayor KRISTA ADAMS and also Councillor for Holland Park cutting the symbolic log, assisted by Steven Huang, Councillor for MacGregor and Brian Wheeler.



John Wicks - Past President MGMS & John Greatrex - President QMSA.







Krista Adams, Nea (Krista's PA) with Steven Huang



Brian Wheeler, Ngari Wheeler, Lesley Pope,  
Rev. Michael Stalley, Margaret Samuels and Peter Tyley



Allan Wallace & Noel Studders



Bert Dean



# Tokens of Appreciation



Brian Wheeler



Ron Bowden



Neville Bishop



Dave Bowes



Robert Bushell



Alf Dare



Bert Dean



Brad Gibson



Geoff Halter



# Tokens of Appreciation



Phil Hillery



Elwyn Jackson



Rod Larkin



Ken Larby

The plaques are in appreciation of the efforts of the members who were involved in the construction of Stage 1 of the original SHED.

The plaques were designed by Wayne Hansen, the acrylic tops were laser engraved and cut by Greg Self and Lloyd Akeroyd made the wooden bases.

The plaques were presented by Deputy Mayor KRISTA ADAMS. Krista has been involved in our SHED since day 1 and is one of our greatest supporters.



Bart McKnight



Arthur Muhl



Brian Nolan



Bob Nunn



# Tokens of Appreciation



Geoff O'Connor



Steve Ogle



Bill Sample



Bill Simpson



Noel Studders



Kevin Schneidewin



Barry White

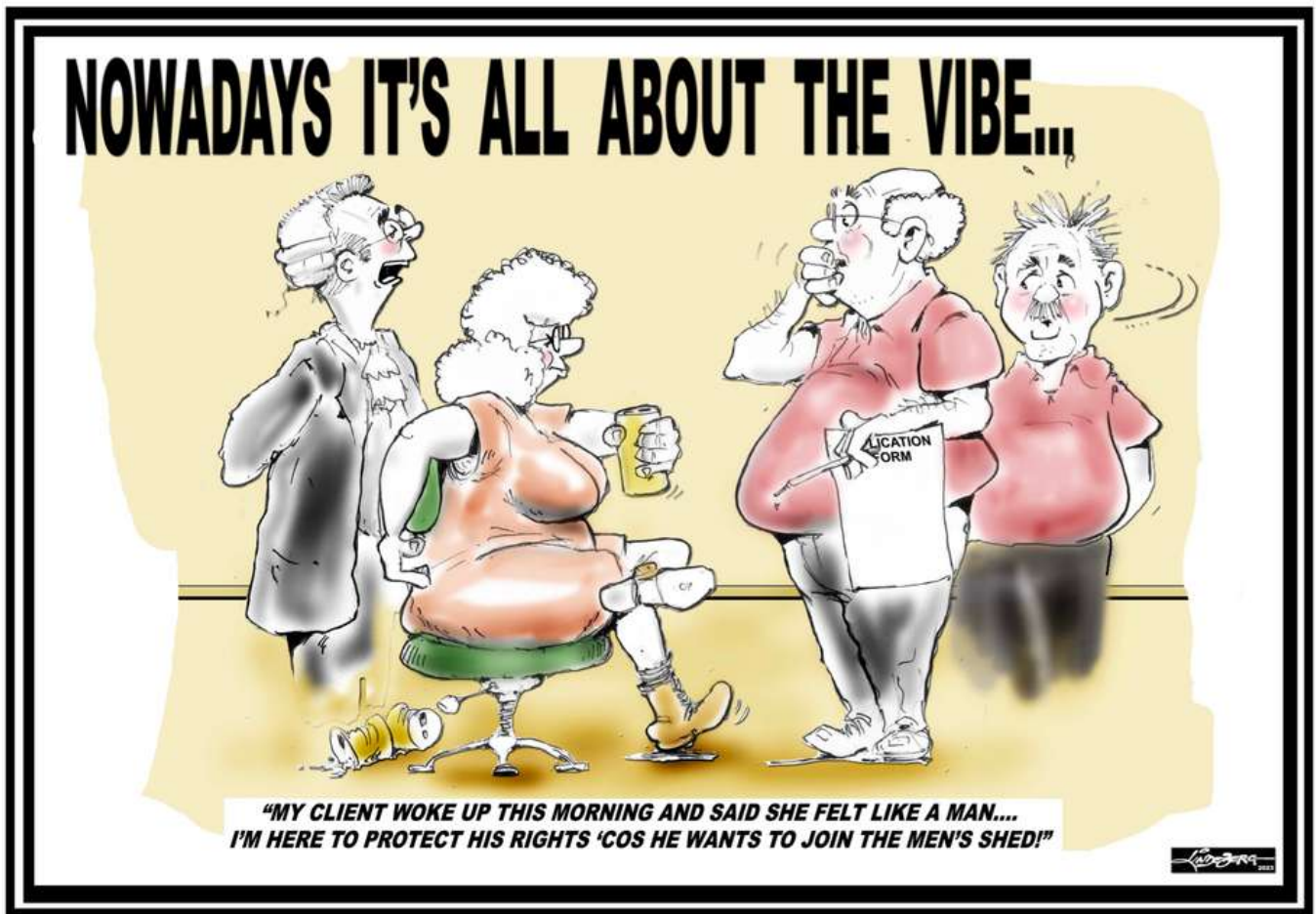


Allan Wallace



Ian Young









# MUSIC GUITAR GROUP

*Terry Thomson - Leader*



The photo above shows the MGMS Big Band with the sign "The Shed Tones" performing at their concert (GIG) for the National Seniors Group on Monday 27th March at the Newnham Hotel. The band played as a warm-up "In the Middle of the Island", "Black Velvet Band", "Tequila Sunrise" and "Some Days Are Diamonds". After being welcomed by the National Seniors Group President Terry introduced the band members and spoke briefly about the aims and vision of MGMS. First was Willie, who led the group with a "I Want to Dance with you" performance.

Next was an Irish medley of "When Irish Eyes are Smiling", "If you're Irish Come into the Parlour", "Mountains of Mourne" and "Molly Malone" with Brian leading the group and members of the audience joined in with the singing. Jack provided the lead vocal for the verses of "Galway Bay", "Maggie" and "Isle of Innisfree" while the group provided backing vocals in the choruses. The band played "Theme for Young Lovers", "There's an Island", "Fields of Athenry" to end the official performance. At the last minute a singing of "Happy Birthday" was added for one of the ladies celebrating her birthday on the day.



From the left are John (the sound mixing man) Dave Williamson, Brian Power, Willie Seeto, obscured is Charles Trevor, Hugh Smith, Mike Clarke, David Richardson, Anthony Pang, missing is Terry Thomson (he was taking the photo) Paul Cusack, obscured is Laurie O'Brien, Jack Files, Daniel James and Basil Wood at the front.

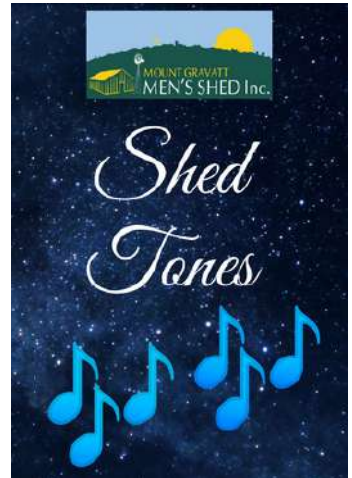
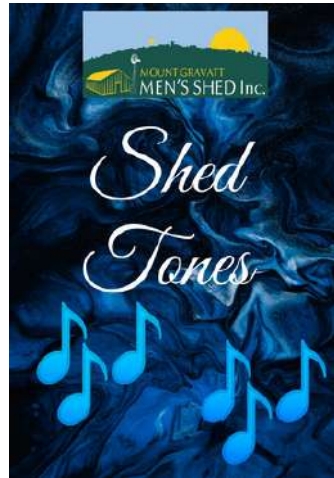


The group had their instruments and microphones connected to the speakers and amplifier through the 12-channel mixer.



From the left are David Richardson and Paul Cusack keeping the beat and playing the drums while Laurie O'Brien is adding to the atmosphere playing the Tamborine.

John, the roadie, put in a lot of effort in getting the sound levels balanced and correct which required many adjustments. The sound was "Fantastic". The performance was 'tight'; a credit to the dedicated and determined to get it right practice and musicianship of the group. The boys looked splendid and professional in their shed shirts, black trousers and polished black shoes.



Cover

The photos above show the two final designs for the band name on the A Frame. The one with the swirling pattern around the music notes is for daytime GIG's while the one with the stars in the night sky is for evening performances. These will be displayed on a metal "A Frame Stand" when the group performs at internal and external functions.



Jack Files in full voice while Hugh Smith, Brian Power, Anthony Pang and Terry Thomson assist with the backing vocals during the chorus of the song "Galway Bay". Daniel James provided some violin music at sections where some "fill in" was required.





# Bus Trip to Awassi Sheep Cheesery

Thursday 13th April



A group of 37 Sheddars with wives & friends enjoyed a day bus trip to Gatton. The first stop was at the Awassi Cheesery & Dairy. This micro dairy business has a flock of Awassi sheep used in the Middle East. Di uses the sheep milk to make many cheese products, including feta cheese, yoghurt, Grantham (like cheddar) cheese, pecorino various types, labna and very importantly, many varieties of ice cream. The farm also grows avocados, & grapes. A most enjoyable visit.

The next stop was the Gatton Cultural Centre for a tasty lunch followed by a good inspection of the Transport Museum and a quick look at the Art Gallery. For some, there was a walk up the hill to the Light on the Hill Memorial (for others a bus ride) to see the memorial to truckies.

The trip was enjoyed by all. The weather was ideal and the company was very agreeable.

Tony G



Cover



Australian Government

**BUILDING OUR FUTURE**



Queensland  
Government



*Dedicated to a better Brisbane*



# New Members for April

# Raffle Results



- |     |                |                   |
|-----|----------------|-------------------|
| 465 | Ian McDonnell  | *returning member |
| 685 | Robert Jackson | *returning member |
| 869 | Jeff Stanley   |                   |
| 875 | Ben Jayaweera  |                   |
| 876 | Peter Everest  |                   |
| 877 | David Breed    |                   |



Life members Jim Pollock and Brian Wheeler.  
Jim was our Grants Writer for many years.



**The Shed Raffle was drawn on Saturday afternoon 22nd April.**

First Prize Ticket No 425 Rick Abbot shed member - The Windmill

Second Prize Ticket No 1215 Helen from Algester - The Squatters chairs

Third Prize Ticket No 090 John Wild shed member from Wishart.  
Wheelbarrow & Beer

Thanks to all who supported this raffle and thanks to all who assisted with the sale of tickets.

Ticket sales for this raffle was \$3140 00.

Funds raised have paid for

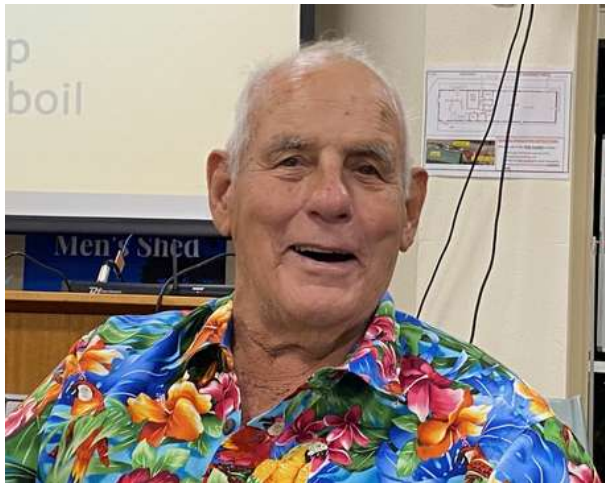
{a}\$500 for a new pump and

{b} \$450 to hire a cherry picker to service our shed Windmill.



# Singalong with Laurie O'Brien

19th April 2023



Cover

St. Barts  
Anglican  
Church  
Mt Gravatt



We gather for worship Every  
Sunday at 7.00am & 9.00 am

ROTARY CLUB OF MOUNT GRAVATT Inc.



PROUDLY SUPPORTS  
THE MOUNT GRAVATT MEN'S SHED Inc.  
Rotary Club of Mt Gravatt is a platinum sponsor of the Shed.



**HERTFORD STREET BAPTIST CHURCH**  
Cnr of Hertford & Dupree Sts.  
Upper Mount Gravatt. 3343 6405  
**Service Time 9:00am**  
MGMS Bronze Sponsor



# TIMING IS EVERYTHING





# Program for MAY 2023

**Saturday 6 May 3:00 Movie Group**

Monday	Tuesday	Wednesday	Thursday	Friday
<b>1 May</b> <b>May Day</b> <b>Shed closed</b>	<b>2</b> 8:00 Leatherwork 8:00 Guitar lessons (2015, 2019, 2020) 8:00 Own woodwork 8:30 Guitar (2021-22) 10:00 Jam session 12:30 Woodcarving 12:30 Guitar (2018) 1:00 HeartFIT	<b>3</b> 8:00 Intermediate woodwork 9:00 Writers group 12:00 Woodturning	<b>4</b> 8:00 Woodturning learners 8:00 Woodworking Introduction 9:00 Cartooning 12:45 Carpet Bowls 8:00 Own woodwork/shed projects	<b>5</b> 8:00 Small engines 8:00 Scroll-saw 9:00 Art/painting 12:30 Ukulele Jam 1:00 Welding 1:00 HeartFIT (Show C'ty hall)
<b>8</b> <b>SOCIAL MEETING</b> <b>COMMUNITY HALL</b> <b>10:30 FOR 11:00</b> <b>\$7.00 Lunch</b> <b>Also includes:</b> <b>SPECIAL GENERAL</b> <b>MEETING re: change</b> <b>to annual fees</b>	<b>9</b> 8:00 Leatherwork 8:00 Guitar lessons (2015, 2019, 2020) 8:00 Own woodwork 8:30 Guitar (2021-22) 10:00 Jam session 12:30 Woodcarving 12:30 Guitar (2018) 1:00 HeartFIT	<b>10</b> 8:00 Intermediate woodwork 9:00 Writers group 12:00 Woodturning 1:00 <b>Management committee meeting</b>	<b>11</b> 8:00 Woodturning learners 8:00 Woodworking Introduction 9:00 Cartooning 10:30 Cooking 12:45 Carpet Bowls 1:00 Own woodwork/shed projects	<b>12</b> 8:00 Small engines 8:00 Scroll-saw 9:00 Art/painting 12:30 Ukulele jam 1:00 Welding 1:00 HeartFIT (Show C'ty hall)
<b>15</b> 8:00 Induction 8:00 Woodturning 9:00 Metal scrolling 9:30 Cards <b>Sausage Sizzle -</b> <b>Guest speaker</b>	<b>16</b> 8:00 Leatherwork 8:00 Guitar lessons (2015, 2019, 2020) 8:00 Own woodwork 8:30 Guitar (2021-22) 10:00 Jam session 12:30 Woodcarving 12:30 Guitar (2018) 1:00 HeartFIT	<b>17</b> <b>9-12:00 First Aid CPR</b> <b>12:30-3:00 First Aid</b> 8:00 Intermediate woodwork 9:00 Writers group <b>10:00 Travel Group meeting</b> 12:00 Woodturning	<b>18</b> 8:00 Woodturning learners 8:00 Woodworking Introduction 9:00 Cartooning 10:00 Native Bee Group 12:45 Carpet Bowls 1:00 Own woodwork/shed projects	<b>19</b> 8:00 Small engines 8:00 Scroll-saw 9:00 Art/painting 12:30 Ukulele jam 1:00 Welding 1:00 HeartFIT (Show C'ty hall)
<b>22</b> 8:00 Woodturning 9:00 Metal scrolling 9:30 Cards	<b>23</b> 8:00 Leatherwork 8:00 Guitar lessons (2015, 2019, 2020) 8:00 Own woodwork 8:30 Guitar (2021-22) 10:00 Jam session 12:30 Woodcarving 12:30 Guitar (2018) 1:00 HeartFIT	<b>24</b> 8:00 Intermediate woodwork 9:00 Writers group 12:00 Woodturning <b>1:00 WOC meeting</b> <b>1:00 Management meeting with</b> <b>Activities Leaders,</b> <b>Coordinators</b>	<b>25</b> 8:00 Woodturning learners 8:00 Woodworking Introduction 9:00 Cartooning 10:30 Cooking 12:45 Carpet Bowls 1:00 Own woodwork/shed projects	<b>26</b> 8:00 Small engines 8:00 Scroll-saw 9:00 Art/painting 12:30 Ukulele jam 1:00 Welding 1:00 HeartFIT (Show C'ty hall)
<b>29 May</b> 8:00 Woodturning 9:00 Metal scrolling 9:30 Cards 12:30 Emerging Technologies	<b>30</b> 8:00 Leatherwork 8:00 Guitar lessons (2015, 2019, 2020) 8:00 Own woodwork 8:30 Guitar (2021-22) 10:00 Jam session 12:30 Woodcarving 12:30 Guitar (2018) 1:00 HeartFIT <b>1:00 B&amp;G meeting</b>	<b>31</b> 8:00 Intermediate woodwork 9:00 Writers group 12:00 Woodturning	<b>1 June</b> 8:00 Woodturning learners 8:00 Woodworking Introduction 9:00 Cartooning 12:45 Carpet Bowls 8:00 Own woodwork/shed projects	<b>2</b> 8:00 Small engines 8:00 Scroll-saw 9:00 Art/painting 12:30 Ukulele Jam 1:00 Welding 1:00 HeartFIT (Show C'ty hall)

# Writers Group: Backup leader sought.